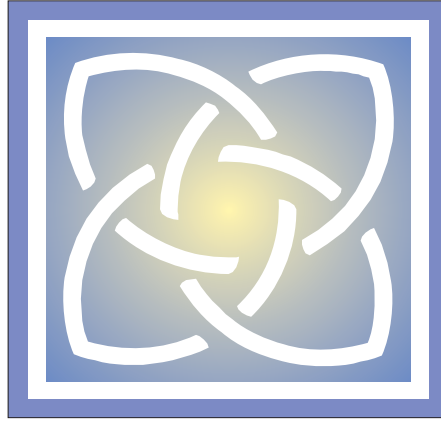


The Coordinating Council of Broward



The CCB: Working Together

The Broward Benchmarks 2008

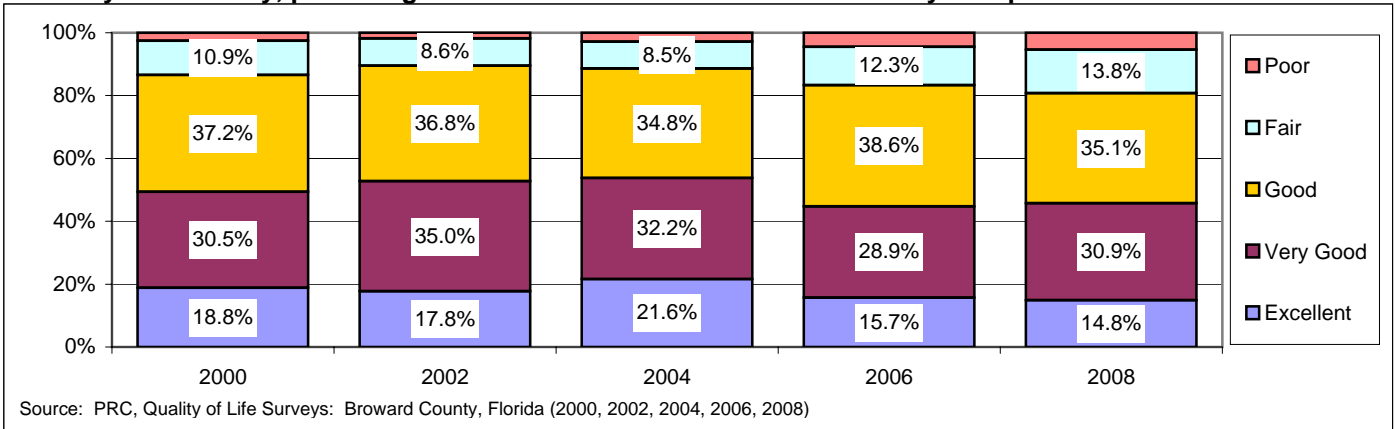
Selected Quality of Life Indicators

Prepared by the South Florida Regional Planning Council

February 9, 2009 (Draft)

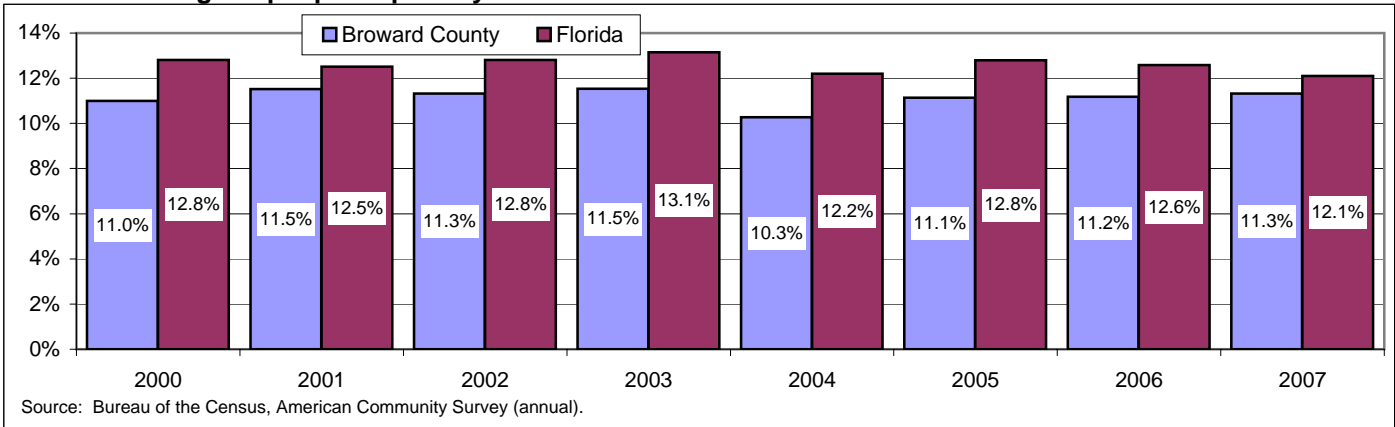
Our Families and Communities

1.1.1 By CCB survey, percentage of adults who describe Broward County as a place to live as ...



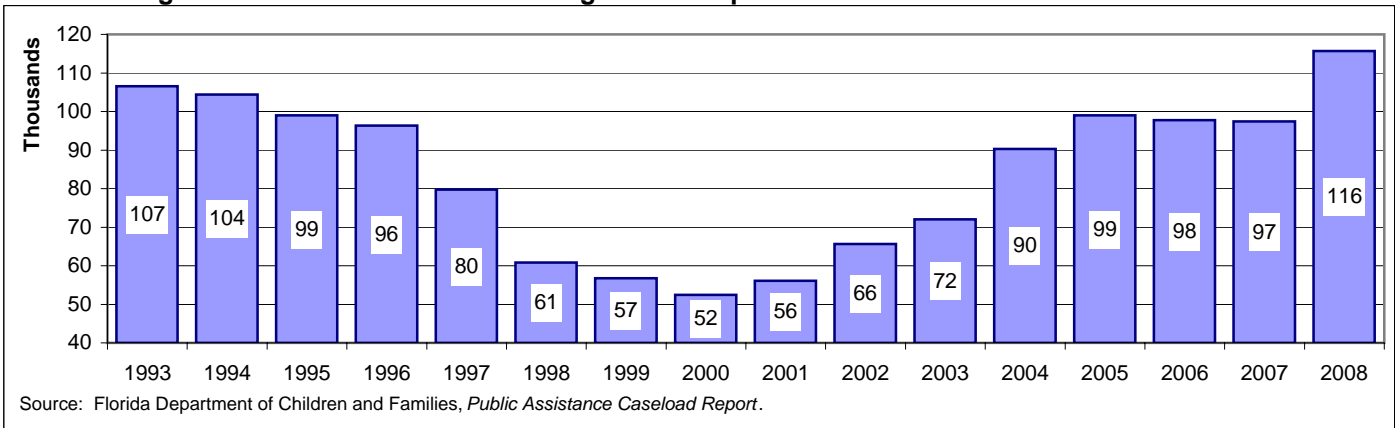
Perception of the quality of life in Broward County remains high - 83.2% of adults describe their quality of life in 2008 as excellent, very good or good. This is lower than the results in 2002 (89.6%) and 2004 (88.6%), possibly affected by recent hurricane activity.

1.3.1 Percentage of people in poverty



The proportion of Broward County's population living in poverty has fluctuated between 11.0% and 11.5% since 2000, except in 2004, when it dipped to 10.3%. Broward County's poverty rate is consistently lower than the State's.

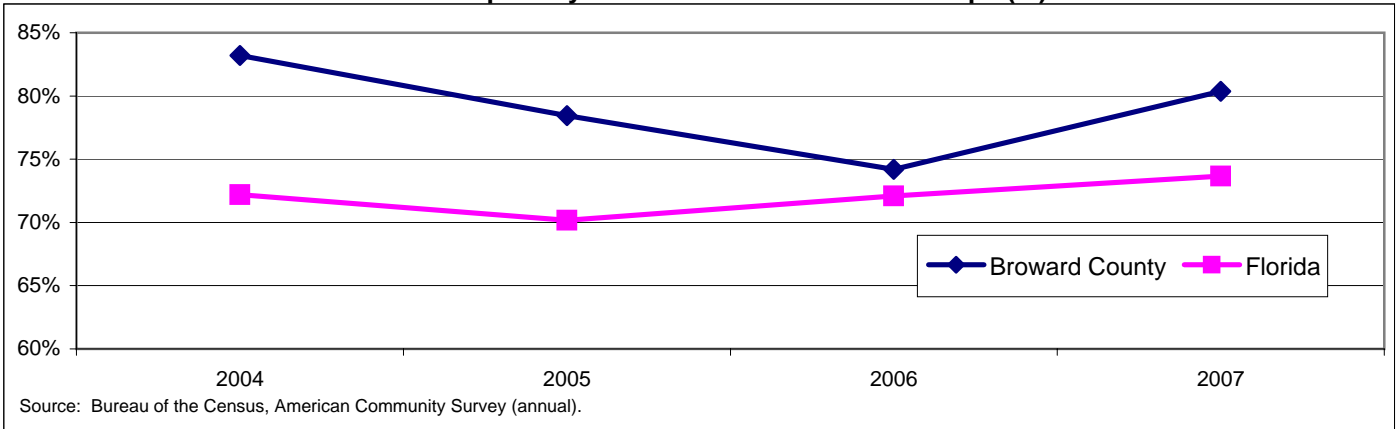
1.3.4 Average number of individuals receiving food stamps



After reaching a low of 52,414 in 2000, the average annual number of persons receiving food stamps in Broward County rose steadily to 115,720 in 2008. In December 2008, the number had risen to 130,050, and was going up by over 2,500 a month.

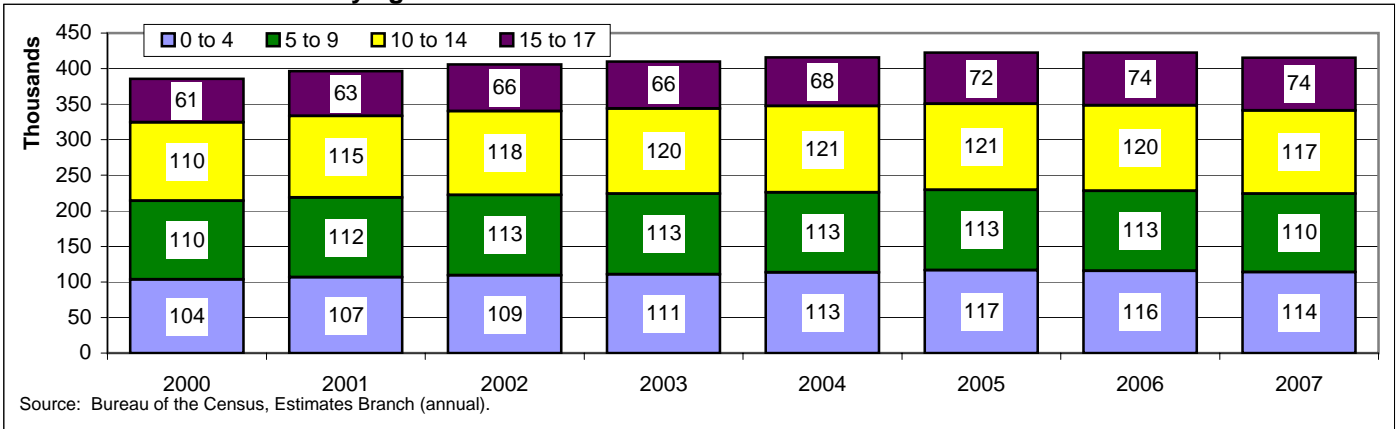
Our Families and Communities

1.3.5 Households with income below poverty that did not receive food stamps (%)



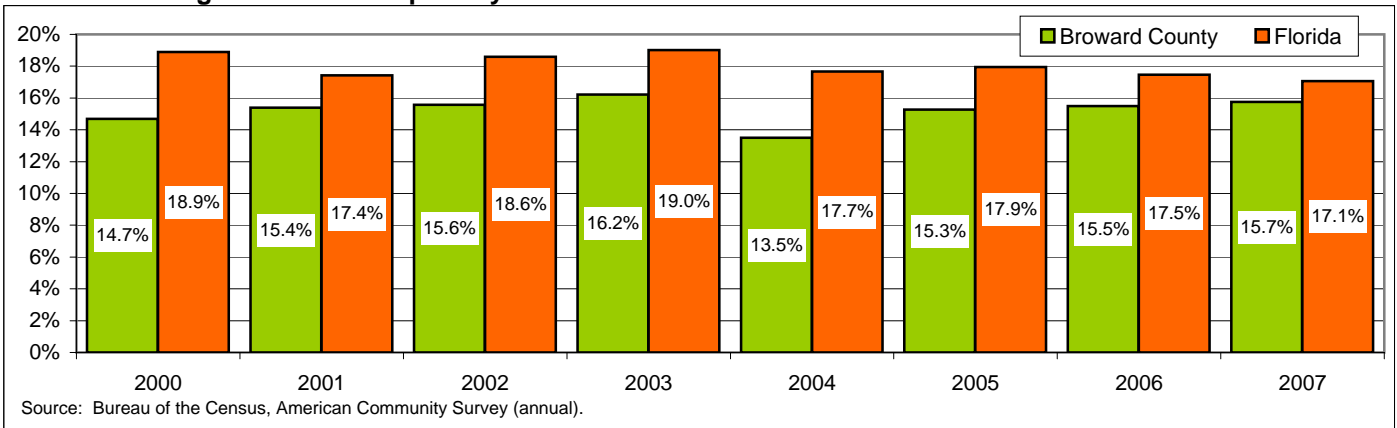
Eligibility for food stamps depends on both household income and assets. In 2007, over 55,000 Broward County households (80.4%) with incomes below poverty did not receive food stamps. This compared to 73.7% in the State of Florida.

1.6.1 Number of children by age



After years of substantial increases, slowing population growth in Broward County after 2005, and an absolute decline in 2007, have led to a fall in the number of children. Broward County public school enrollment is down almost 17,000 students over the last 4 years.

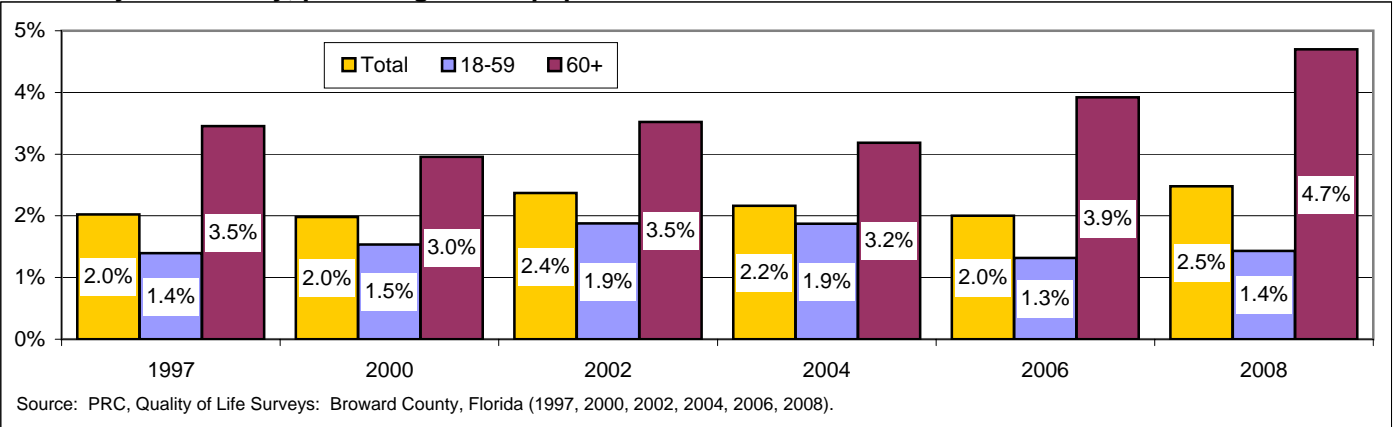
1.6.2 Percentage of children in poverty



Broward County's child poverty rate hit a high of 16.2% in 2003, dropped to its lowest level in 2004 (13.5%), and then rose gradually from 15.3% in 2005 and to 15.7% in 2007. Broward County's rate is consistently below the state average.

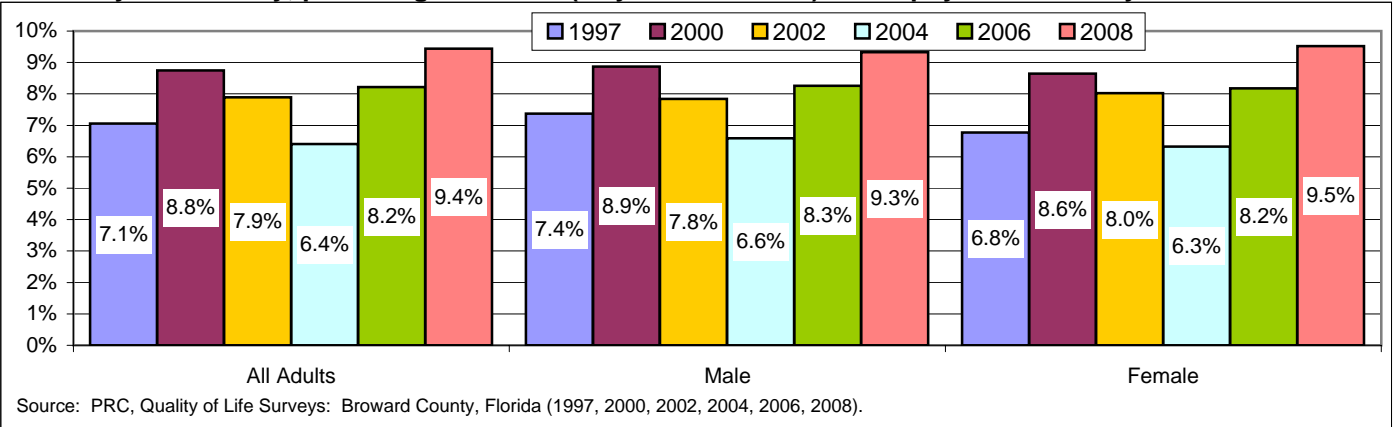
Our Families and Communities

1.11.2 By CCB survey, percentage of the population with a self-care limitation



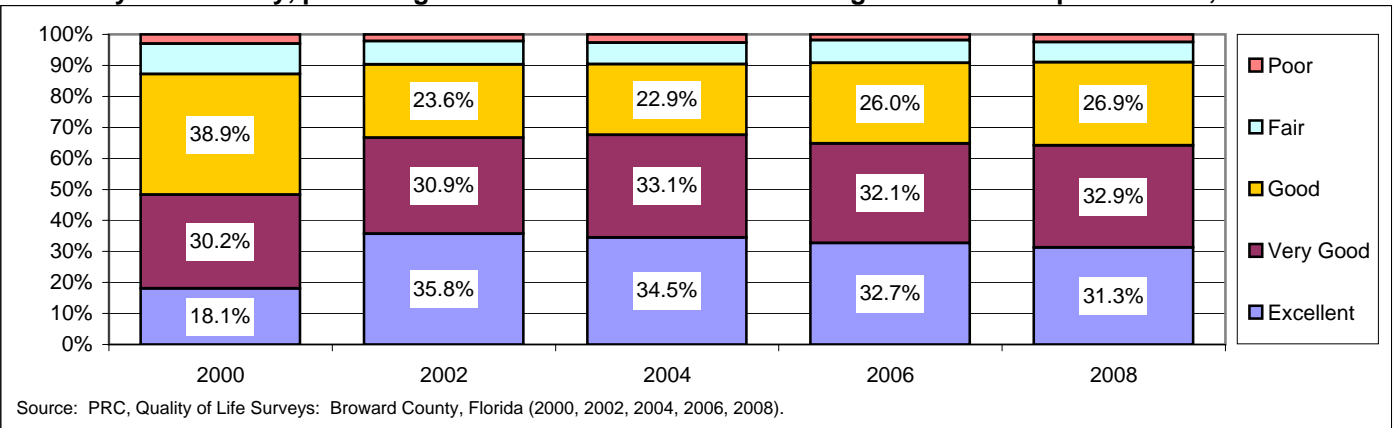
In 2008, 2.5% of Broward County adults had a self-care limitation, up from 2.0% in 2006. The population 60 years and over has had a consistently higher rate, which reached a high of 4.7% in 2008.

1.12.4 By CCB survey, percentage of adults (18 years and older) with a physical disability



Physical disabilities were reported by 9.4% of Broward County adults in 2008, up from a low of 6.4% in 2004. The proportion of males and females with a physical disability does not vary significantly in the different surveys.

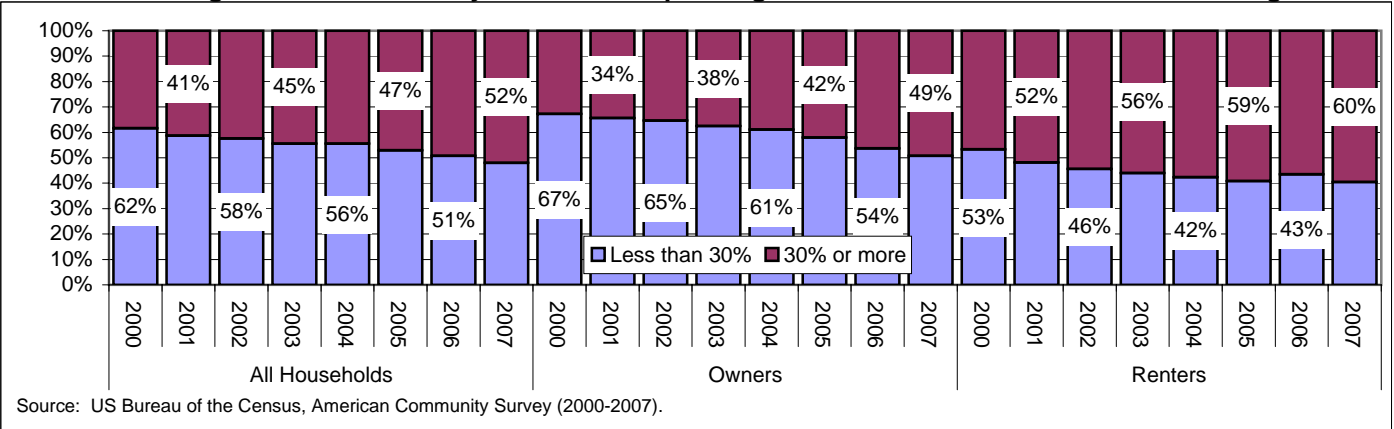
1.13.1 By CCB survey, percentage of adults who describe their neighborhood as a place to live, as ...



In 2008, nine out of ten Broward County adults described their local community as an excellent, very good or good place to live; almost two-thirds felt their communities were excellent or very good. These results have been more or less consistent since 2002.

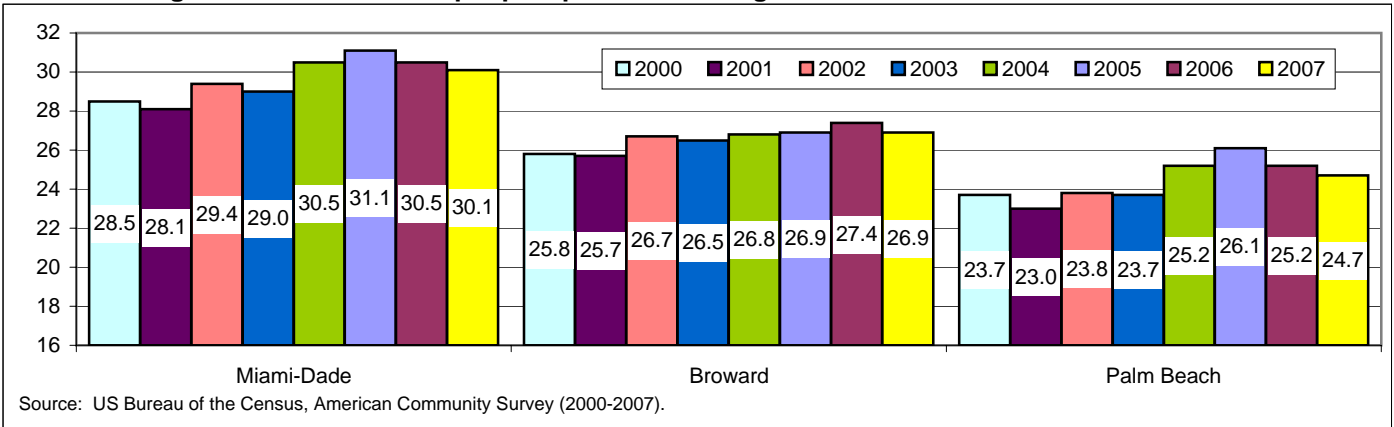
Our Families and Communities

1.14.1 Percentage of Broward County households spending 30% or more of their income on housing



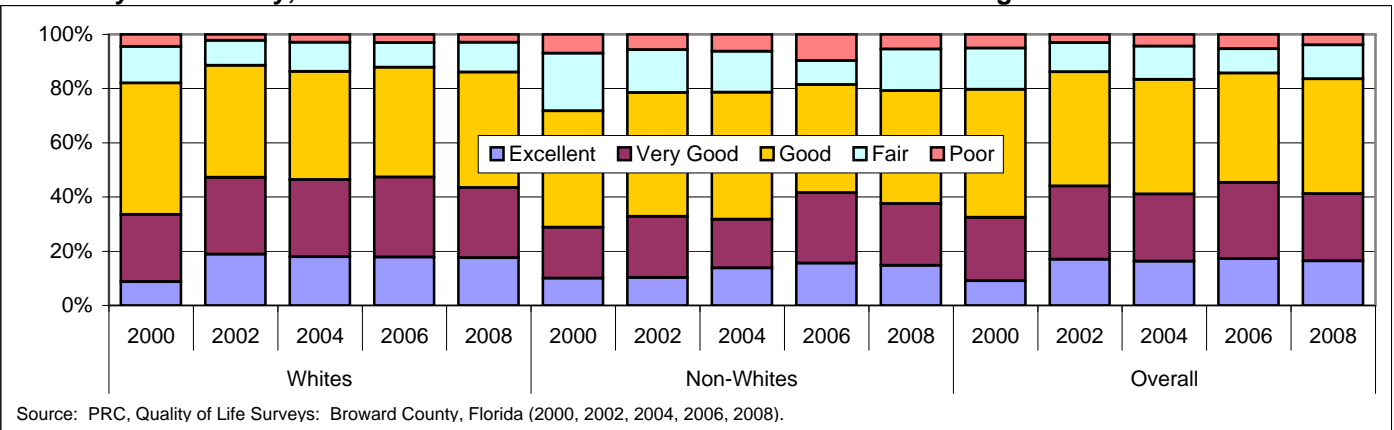
As housing prices in Broward County rose dramatically over the past six years, the proportion of households spending 30% or more of household income on housing also rose. In 2006, 46% of owners and 57% of renters spent 30% or more of their income on housing.

1.15.2 Average number of minutes people spent commuting to work



Congestion on South Florida's highways continues to worsen, leading to rising commute times. In 2007, the average commute time for Broward County residents was 26.9 minutes, up by 1.1 minutes since 2000, and 1.6 minutes above the national average.

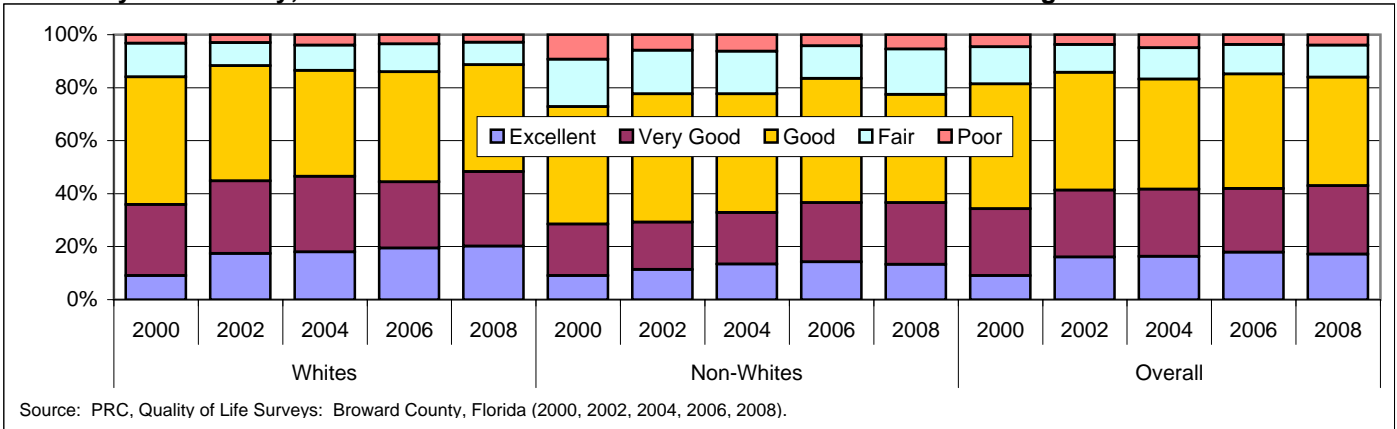
1.16.1 By CCB survey, % of adults who believed that race relations in their neighborhood were ...



In 2008, 83.6% of adults in Broward County felt that race relations in their neighborhood were excellent, very good or good, up from 79.7% in 2000, but down from 86.2% in 2002. Whites consistently rate race relations better than non-whites.

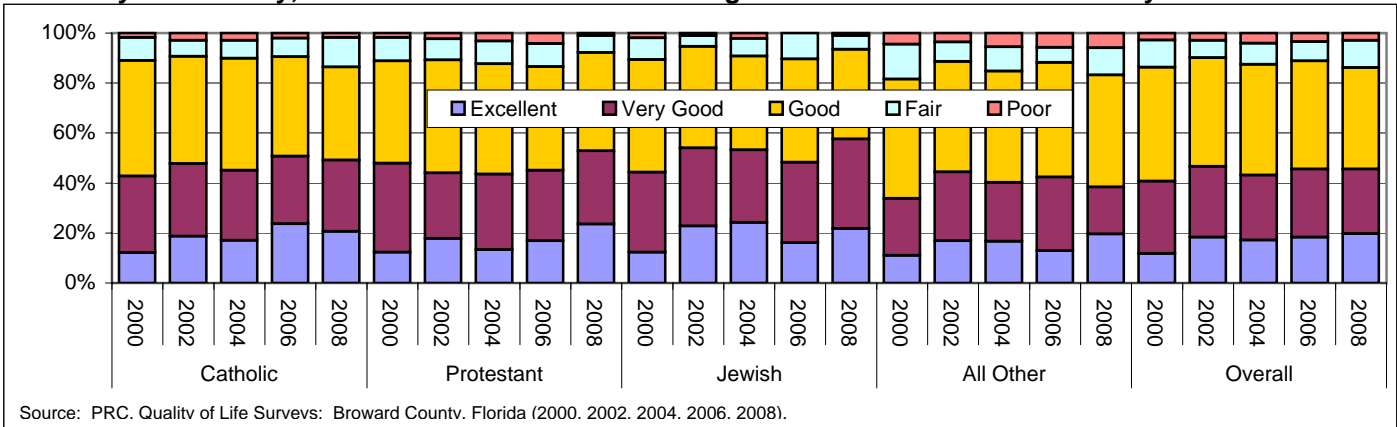
Our Families and Communities

1.17.1 By CCB survey, % of adults who believed that cultural relations in their neighborhood were ...



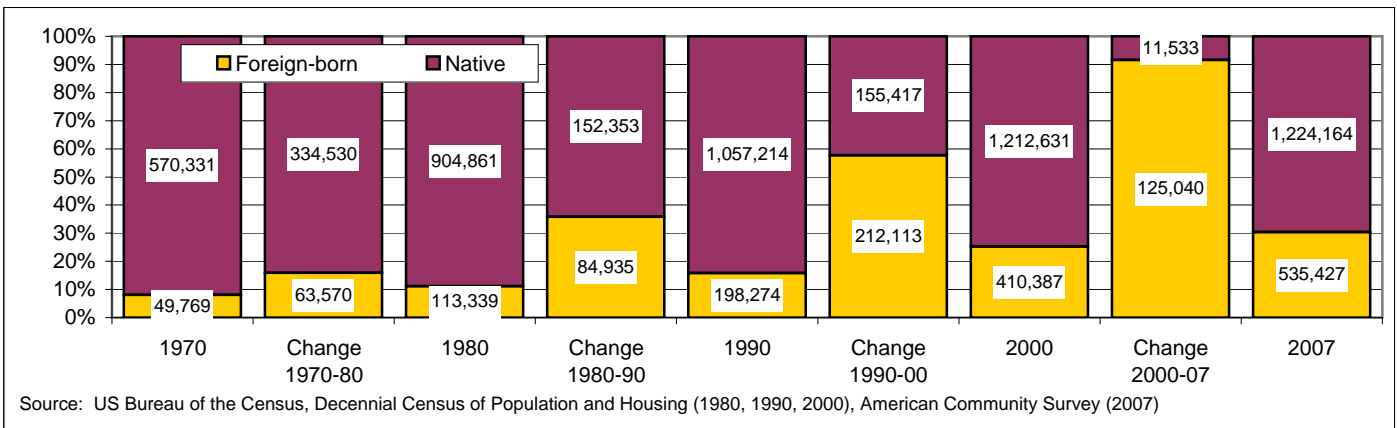
In 2008, 83.9% of adults in Broward County felt that cultural relations in their neighborhood were excellent, very good or good, down from a high of 85.8% in 2002, but up from 81.4% in 2000. Whites consistently rate cultural relations better than non-whites.

1.18.1 By CCB survey, % of adults who believed that religious relations in their community were ...



In 2008, 86.2% of adults in Broward County felt that religious relations in their neighborhood were excellent, very good or good, down from a high of 90.1% in 2002. People of Protestant and Jewish faith rated religious relations in the neighborhood higher in 2008.

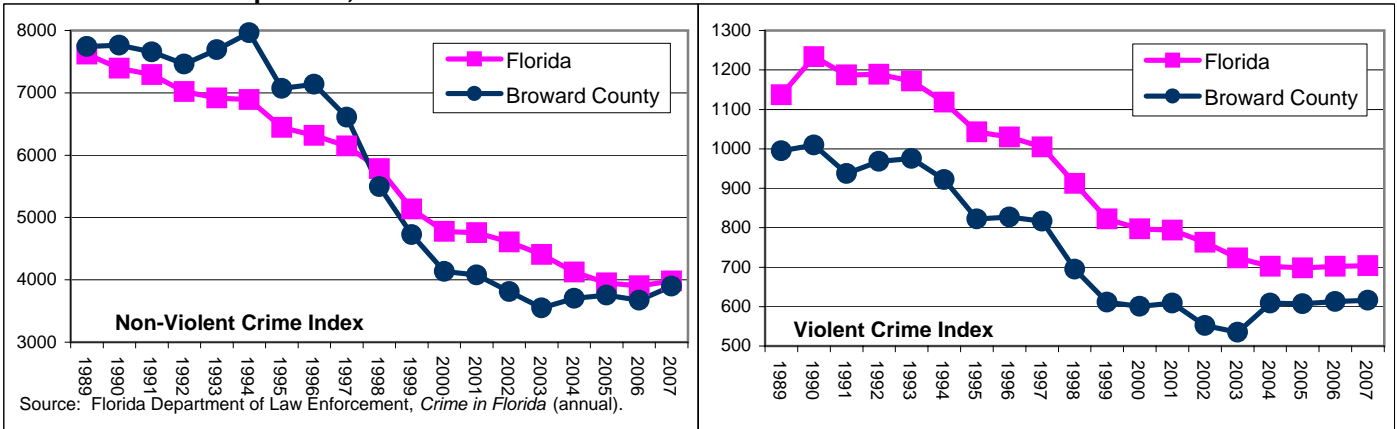
1.22.1 Number of net new residents who were born abroad



Over the three decades between 1970 and 2000, the proportion of Broward County residents who were foreign-born more than tripled from 8.0% to 25.9%. Between 2000 and 2007, nine out of every ten new residents came from abroad.

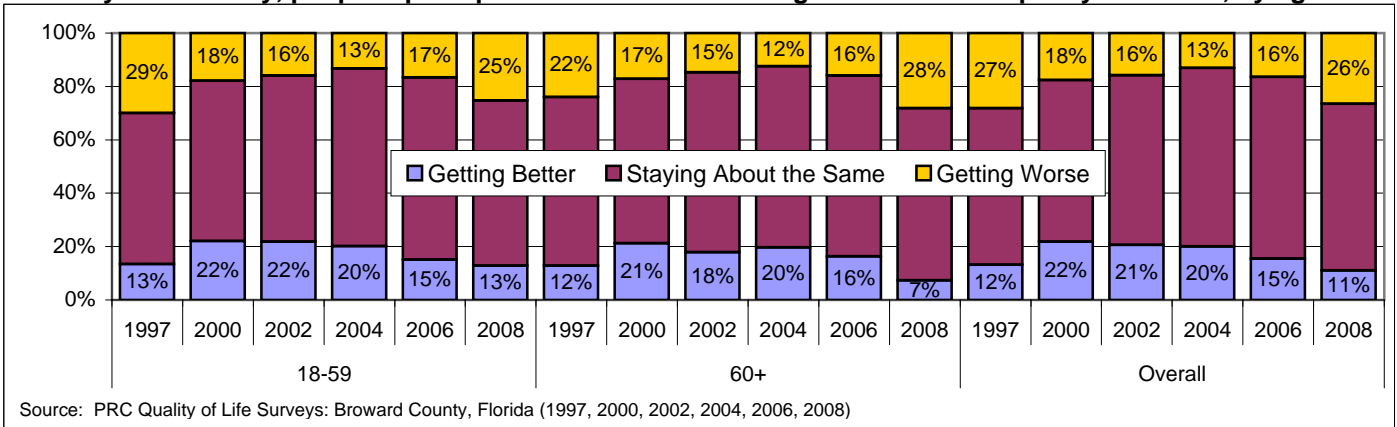
Our Safety

2.1.1 Index crimes per 100,000 residents



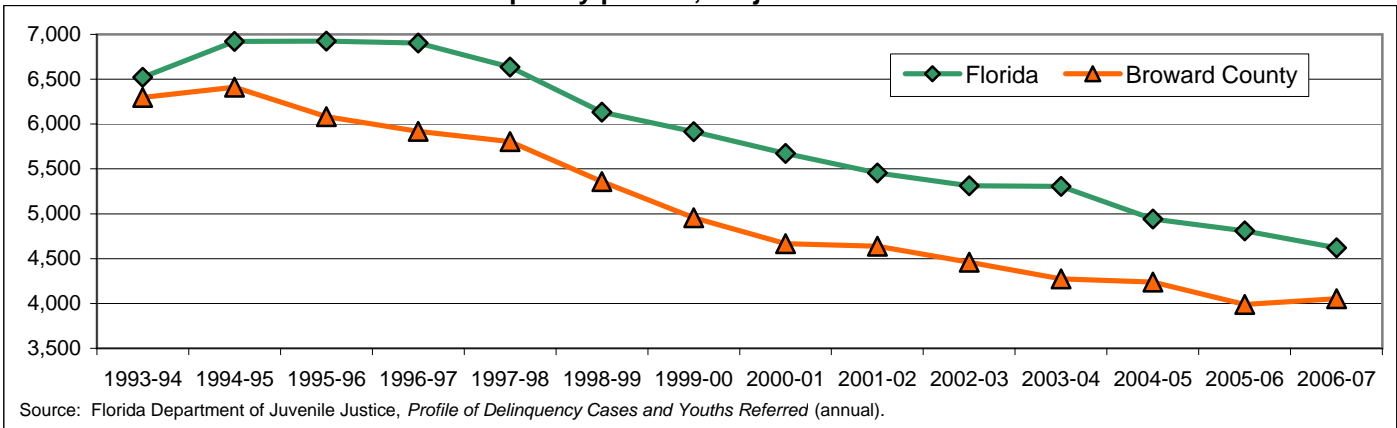
The non-violent index crime rate in Broward County, which peaked at 7,963 per 100,000 residents in 1994, fell to less than half that in 2002 (3,809), and has remained under 4,000 ever since. Broward's violent crime rate is consistently lower than the state average.

2.3.1 By CCB survey, people's perception of crime in their neighborhood in the past year or two, by age



The proportion of Broward County adults who feel that crime in their neighborhoods is getting worse doubled from a low of 13.1% in 2004 to 26.5% in 2008. Those who feel that crime is getting better fell to 11.1% from 20.0% in 2004.

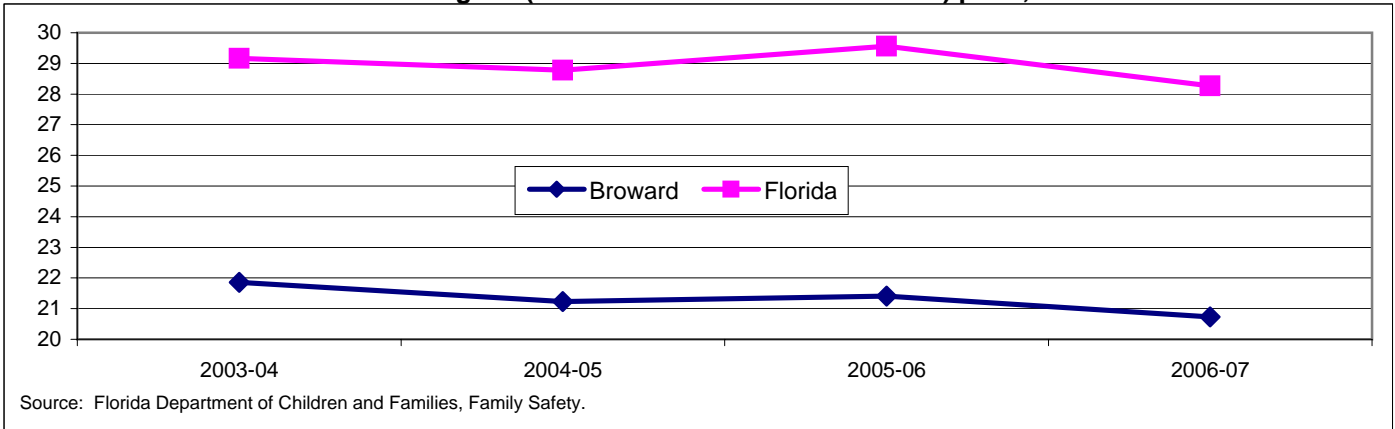
2.6.1 Juveniles 10-17 referred for delinquency per 100,000 juveniles



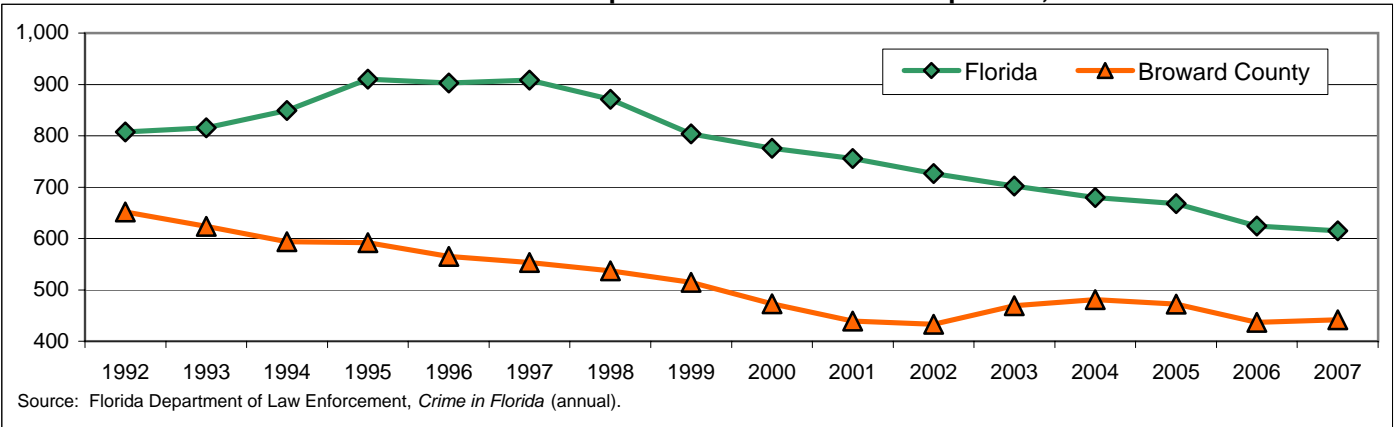
The rate of Broward County juveniles referred for delinquency fell from a high of 6,412 per 100,000 youths in 1994-95 to 4,054 in 2006-07. Broward County's juvenile referral rate has been significantly below the state average each year over the last decade.

Our Safety

2.8.1 Victims of child abuse and neglect ("verified" and "some indication") per 1,000 children

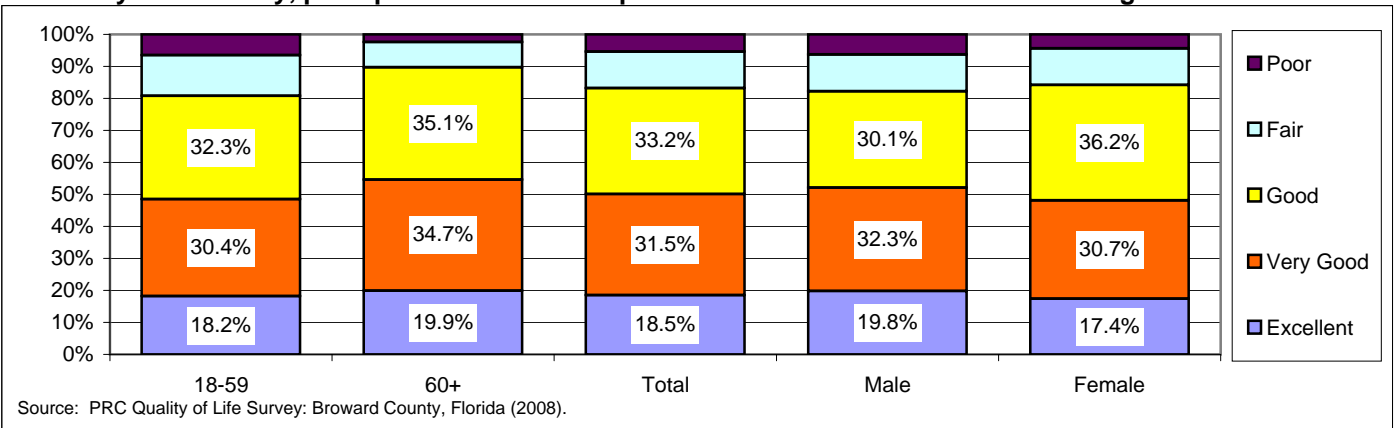


2.9.1 Number of domestic violence incidents reported to law enforcement per 100,000 residents



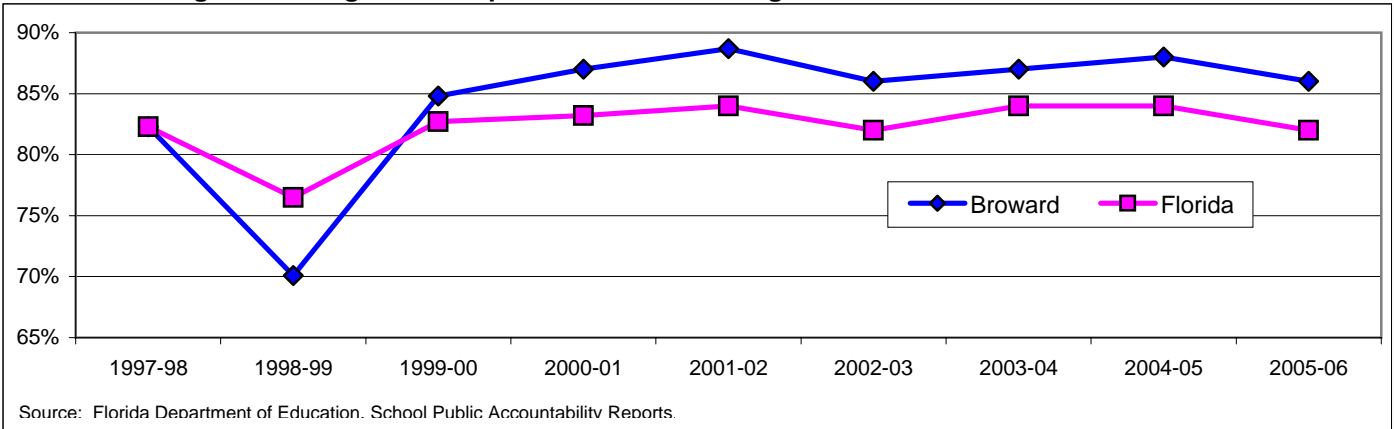
Incidents of domestic violence in Broward County declined from 652 per 100,000 residents in 1992 to 441 in 2007. The rate in Broward County has remained substantially lower than the state average over the last 15 years.

2.17.1 By CCB survey, perception of the overall performance of local law enforcement agencies



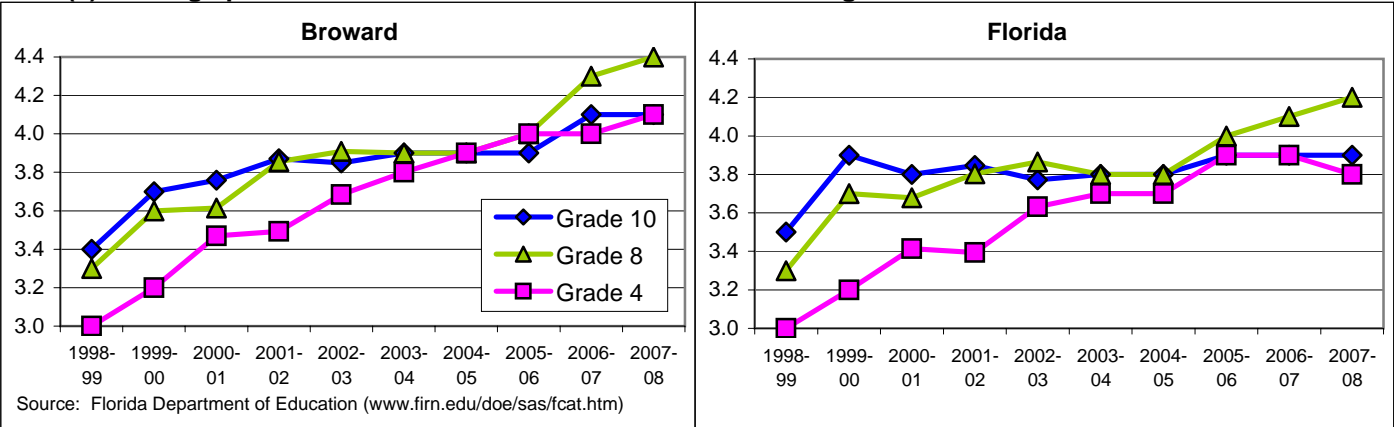
Our Learning

3.2.1 Percentage of kindergartners in public schools meeting state readiness standards



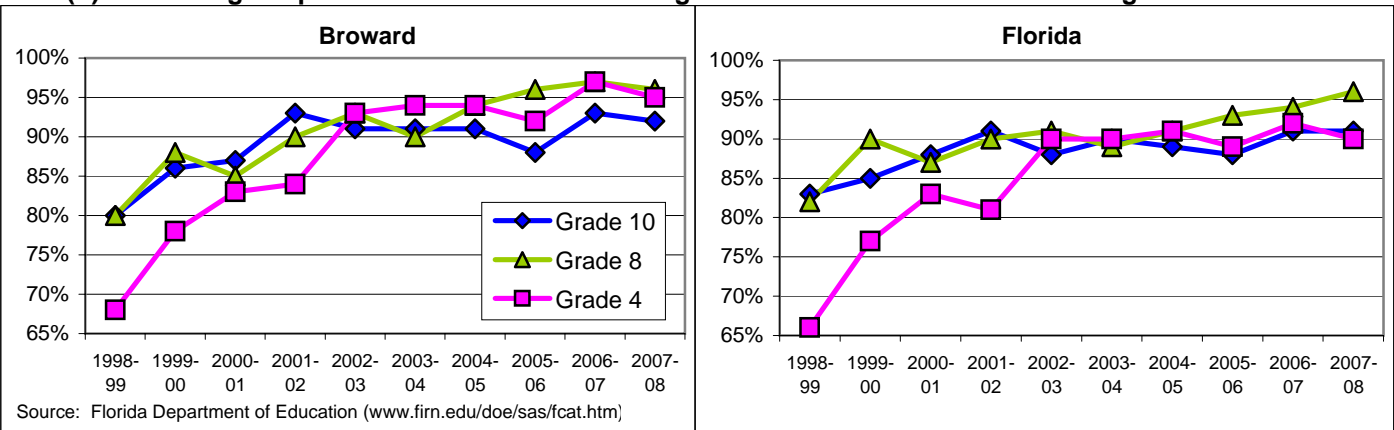
The percentage of Broward County kindergartners meeting state readiness standards fell to 70% in 1998-99, but recovered to 85% in 1999-00, and has remained between 85% and 90% ever since. Broward County results regularly outperform the State of Florida.

3.3.1(a) Average public school student scores on the FCAT Writing Assessment



Average scores on the FCAT Writing Assessment in Broward County rose consistently in all three grades between 1998-99 and 2007-08. Broward results were better than the statewide averages for each grade.

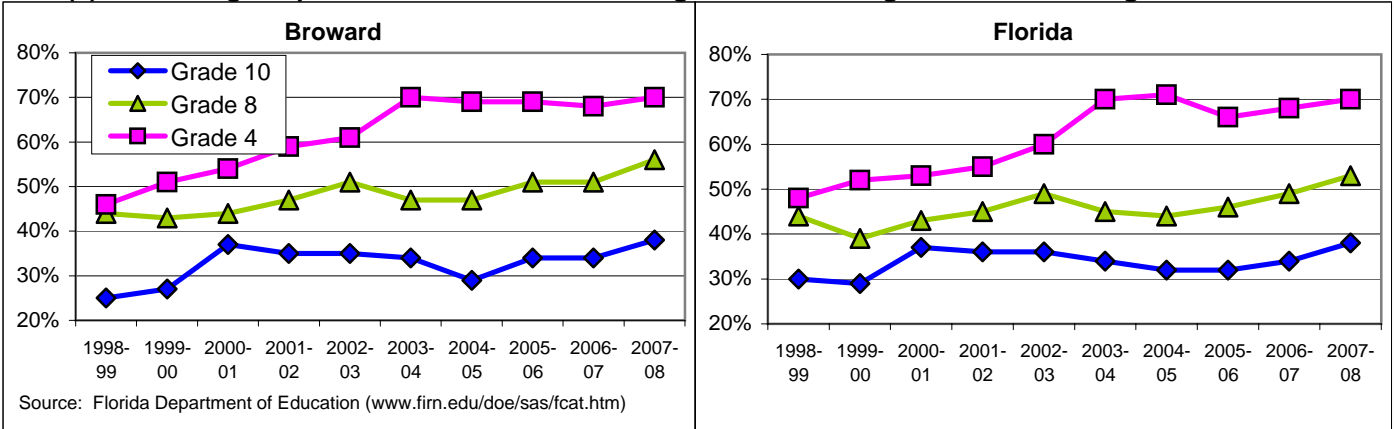
3.3.1(b) Percentage of public school students scoring 3.0 and above on the FCAT Writing Assessment



The percentage of Broward County students scoring 3.0 or better on the FCAT Writing Assessment rose significantly between 1998-99 and 2006-07, before declining slightly in 2007-08. Broward results were equal to or better than the statewide averages.

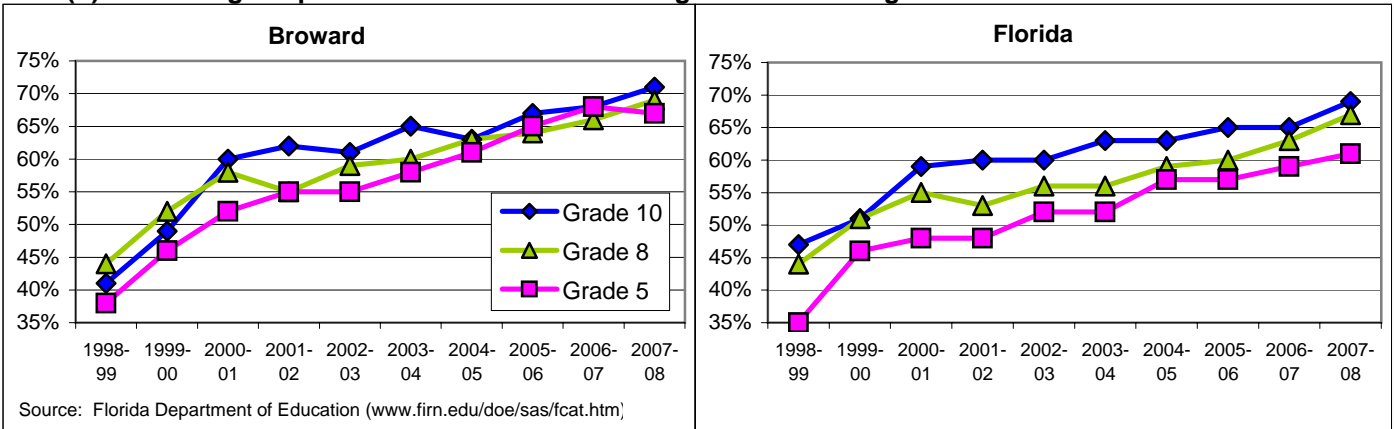
Our Learning

3.3.2(a) Percentage of public school students scoring at Level 3 or higher: FCAT Reading scores



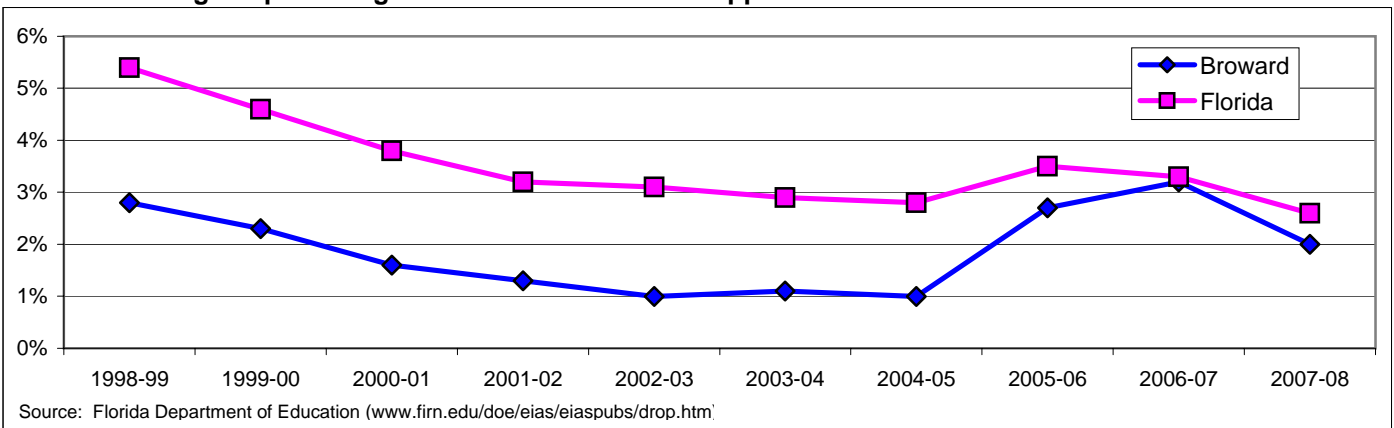
The percentage of Broward County students scoring 3.0 or better on the FCAT Reading Assessment, after rising through 2002-03, remained stable through 2006-07, then rose in 2007-08. Broward results have remained about the same as statewide averages.

3.3.2(b) Percentage of public school students scoring at Level 3 or higher: FCAT Mathematics scores



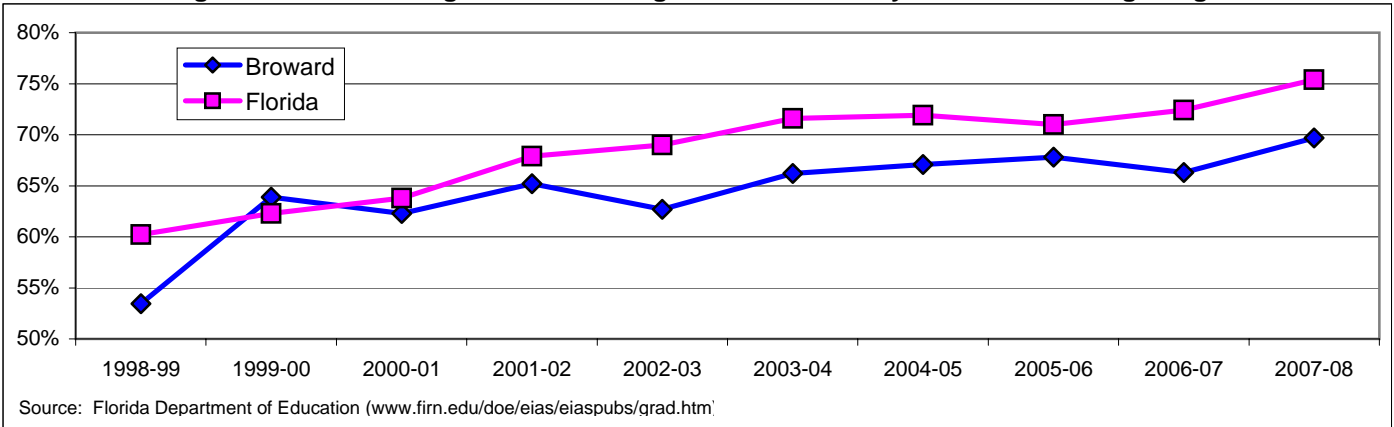
The percentage of Broward County students scoring 3.0 or better on the FCAT Math Assessment rose significantly between 1998-99 and 2007-08. Broward results were equal to or better than the statewide averages for every grade.

3.5.1 Percentage of public high school students who dropped out of school

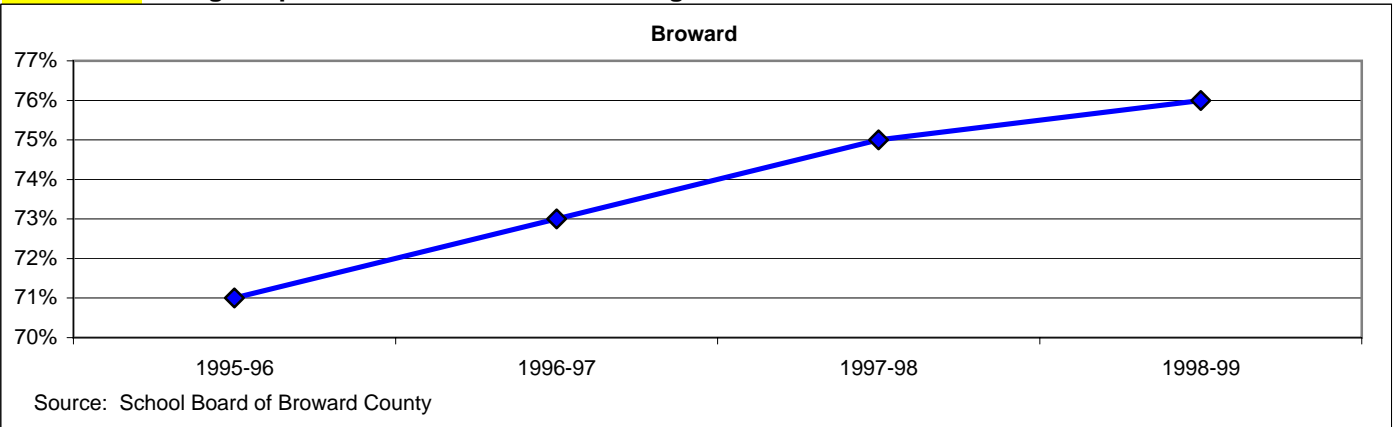


Our Learning

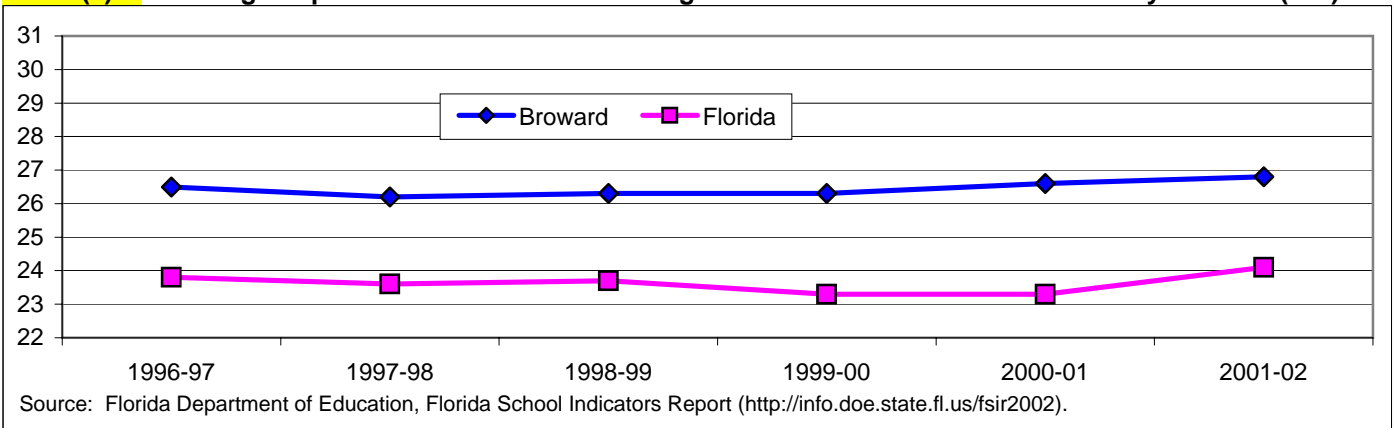
3.5.2 Percentage of students who graduate from high school within 4 years after entering 9th grade



3.16.2 Percentage of public education dollars flowing to the classroom

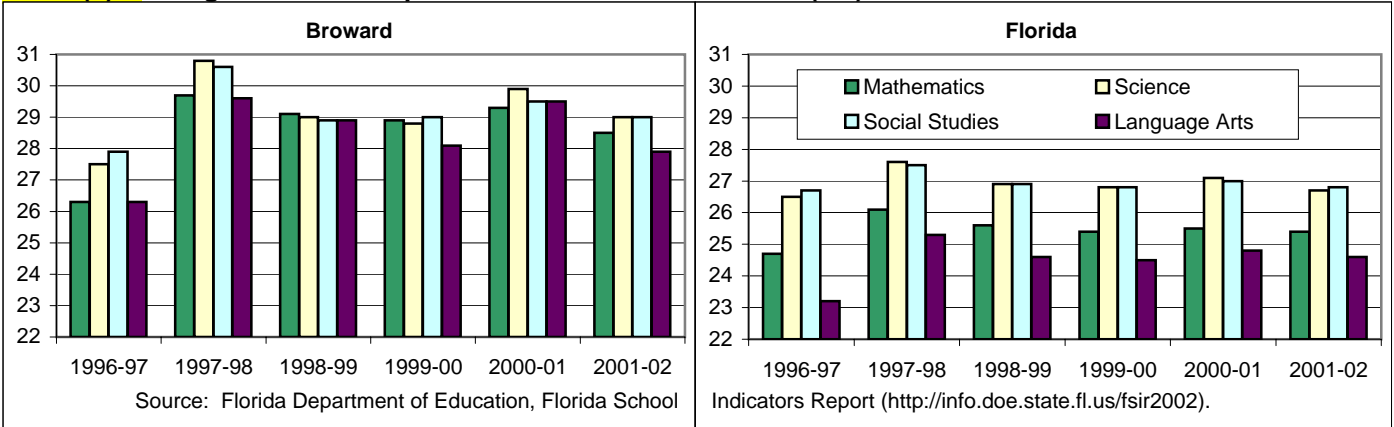


3.17.2(a) Percentage of public school classes meeting State standards for size: Elementary Schools (K-5)

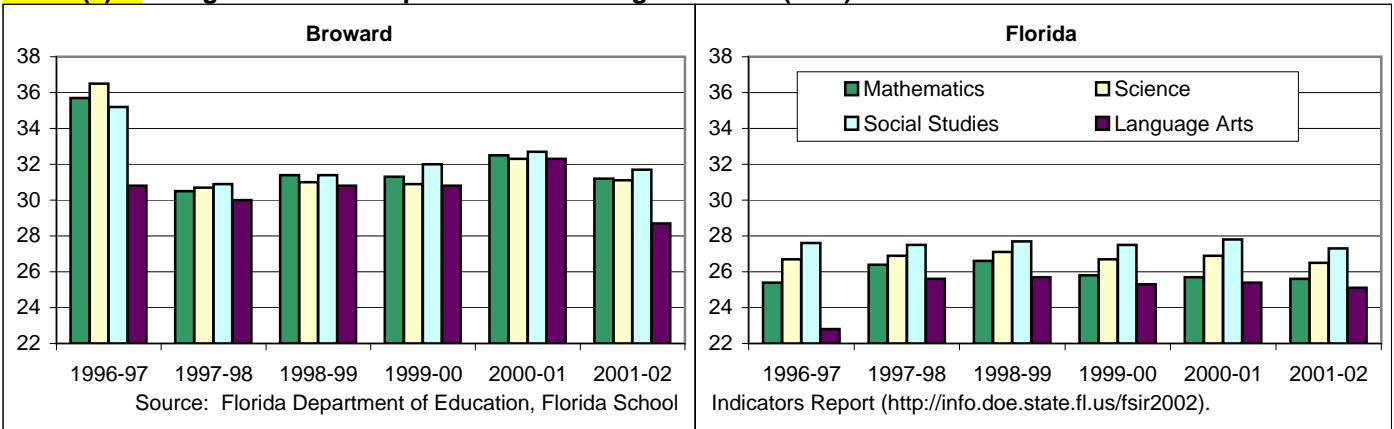


Our Learning

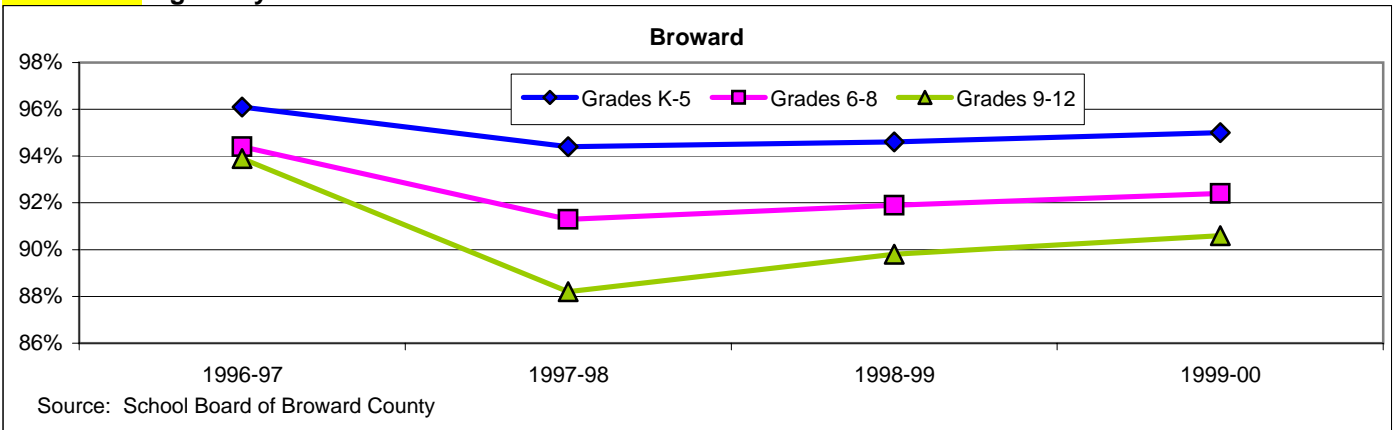
3.17.2(b) Average class size in public schools: Middle Schools (6-8)



3.17.2(c) Average class size in public schools: High Schools (9-12)

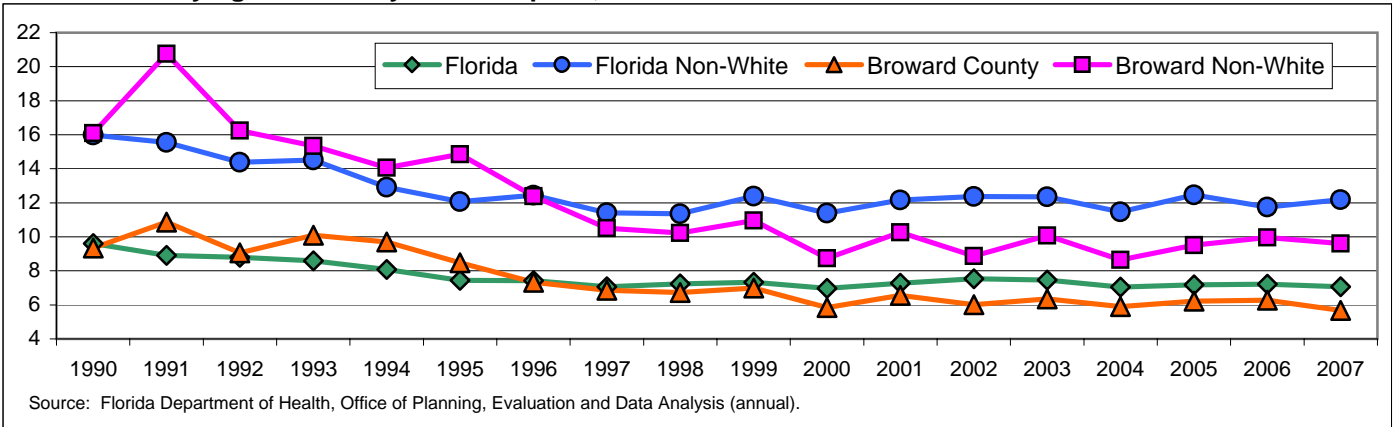


3.19.2 Average daily attendance



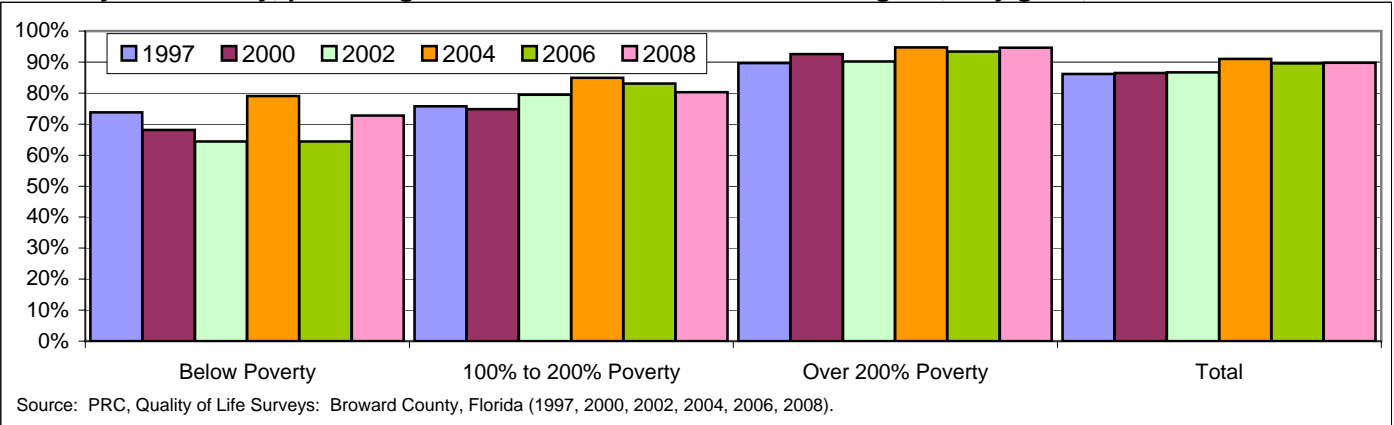
Our Health

4.3.1 Infants dying in the first year of life per 1,000 births



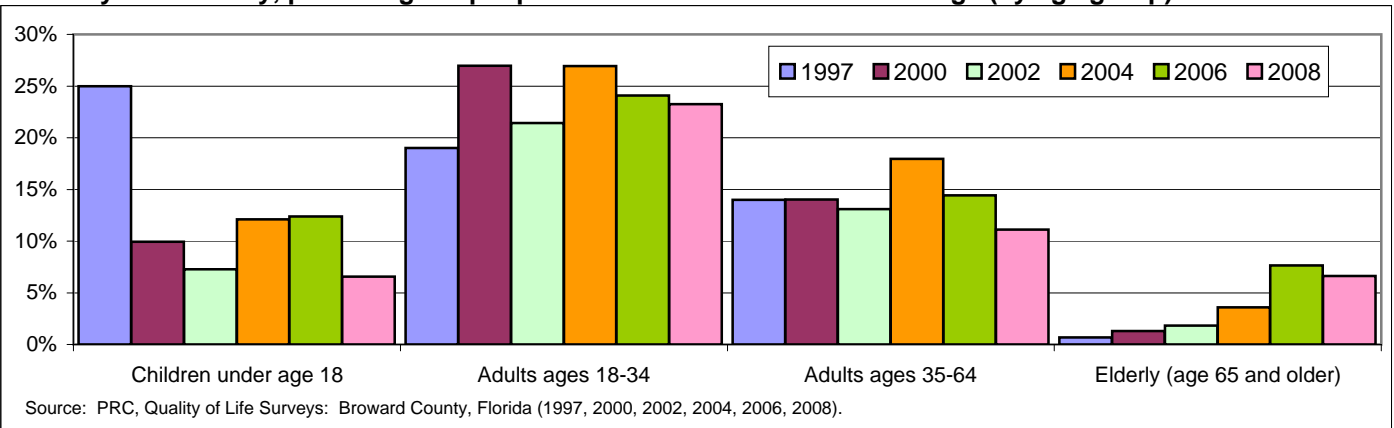
The infant mortality rate in Broward County declined from a high of 10.9 per 1,000 live births in 1991 to 5.7 in 2007, which is significantly lower than the Florida average of 7.1. The non-white rate (9.6) was more than three times the white rate (3.0) in Broward in 2007.

4.5.1 By CCB survey, percentage of adults who rated their health as good, very good, or excellent



Health status improves with income - in 2008, 72.7% of adult Broward County residents with income below the poverty level rated their health as excellent, very good or good, well below the rate of 94.6% for those with income above 200% of the poverty level.

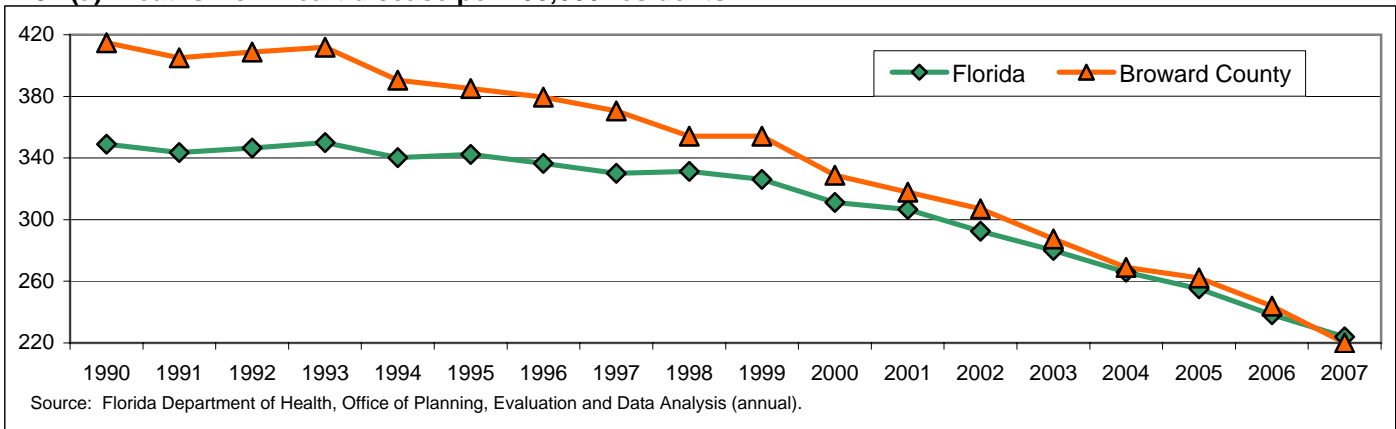
4.6.1 By CCB survey, percentage of people who had no health care coverage (by age group)



The share of Broward County population without health insurance is highest among those in the youngest working ages. The rate of uninsured for all adults in 2008 declined to 12.7% from a high of 17.6% in 2004, and the rate for children declined to 6.6%.

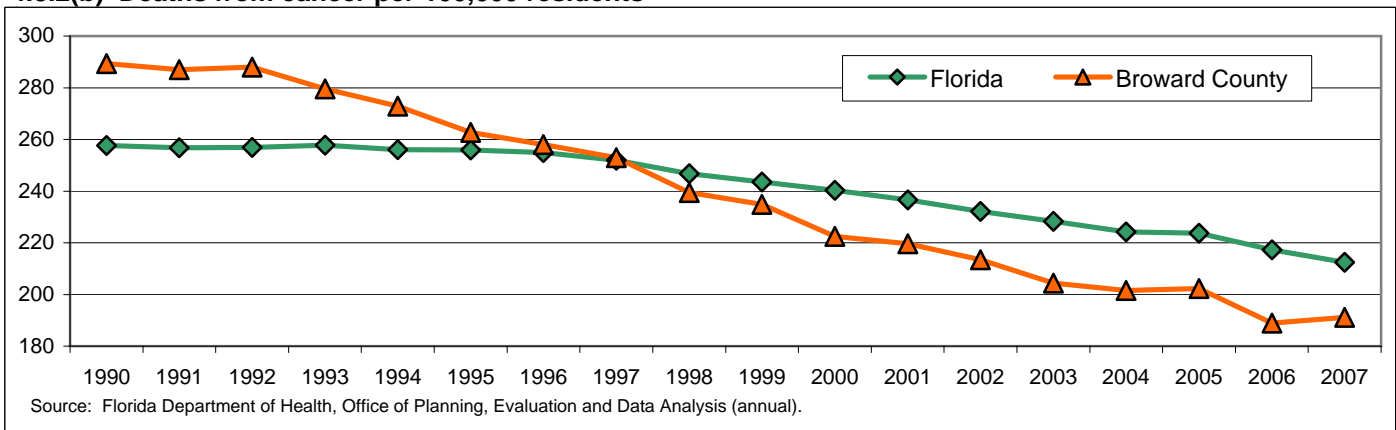
Our Health

4.8.2(a) Deaths from heart disease per 100,000 residents



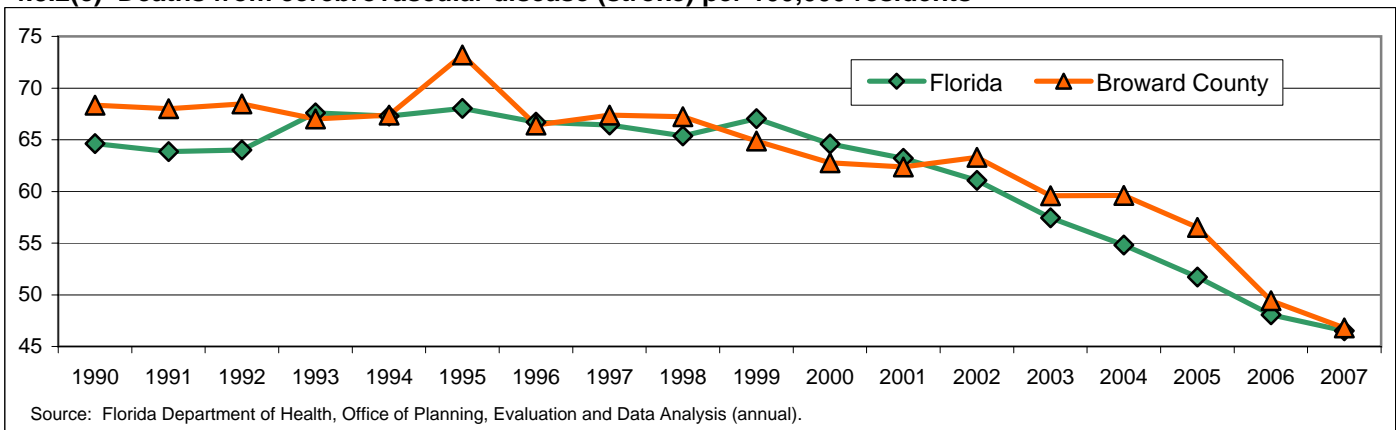
Death rates from heart disease continue to fall in both Broward County and the State of Florida. In 2007, Broward County's rate reached 220 per 100,000 residents, down from 415 in 1990, and for the first time falling below the State of Florida's rate (224).

4.8.2(b) Deaths from cancer per 100,000 residents



Death rates from cancer have declined steadily over the years, in both Broward County and the State of Florida. In 2007, Broward County's rate leveled off at 191 per 100,000 residents, down from 289 in 1990. This compares to 212 in the State of Florida in 2007.

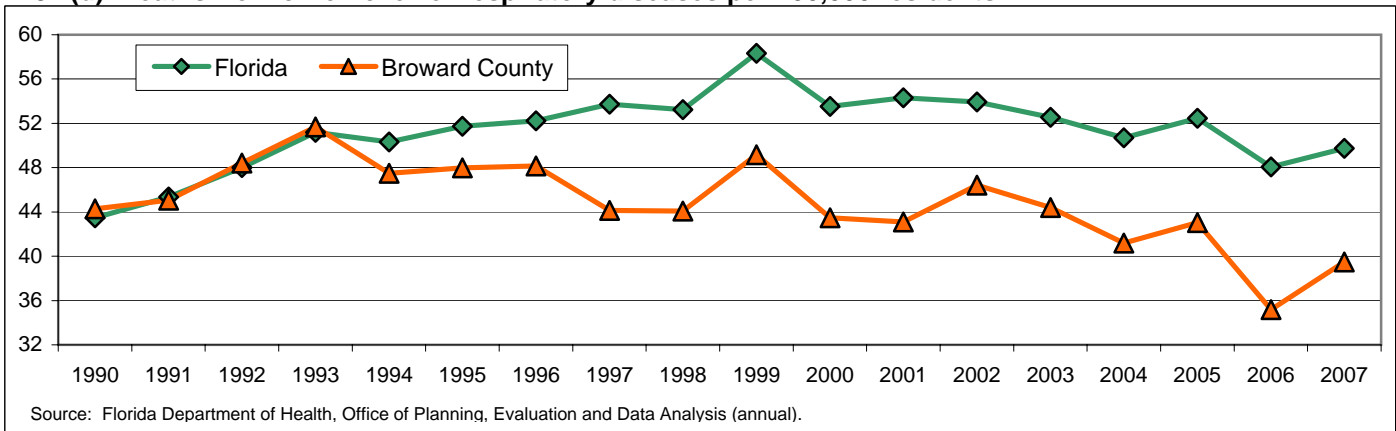
4.8.2(c) Deaths from cerebrovascular disease (stroke) per 100,000 residents



After remaining more or less stable for a decade, death rates from stroke have declined significantly in recent years. Broward County's rate of 46.8 per 100,000 residents in 2007 is only slightly higher than the State of Florida average (46.5).

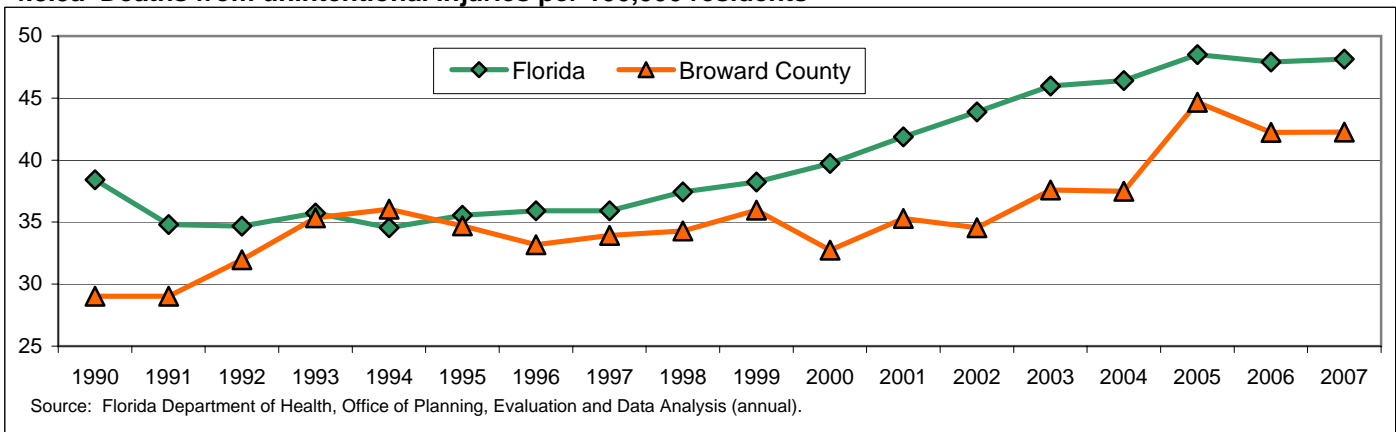
Our Health

4.8.2(d) Deaths from chronic lower respiratory diseases per 100,000 residents



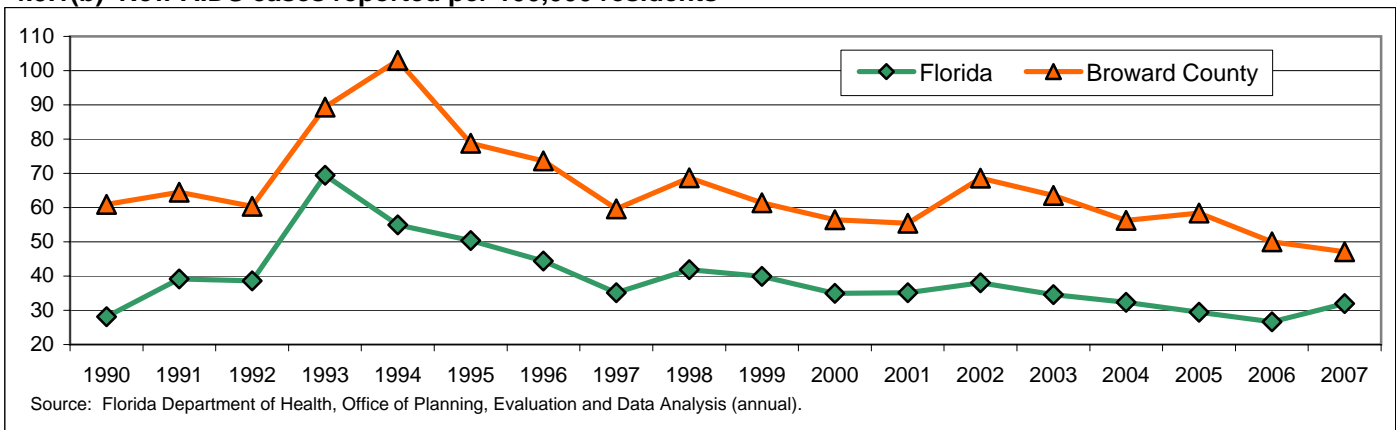
Death rates from lung diseases have fluctuated significantly over the last decade. Broward County's rate rose to 39.5 per 100,000 residents in 2007 after reaching a low of 35.2 the year before. This compares to a rate of 49.7 for the State of Florida in 2007.

4.8.3a Deaths from unintentional injuries per 100,000 residents



Broward County deaths from unintended injuries have leveled off after rising significantly in recent years. The rate was 42.3 per 100,000 residents in 2007, down from a high of 44.7 in 2005, and well below the State of Florida average of 48.2 in 2007.

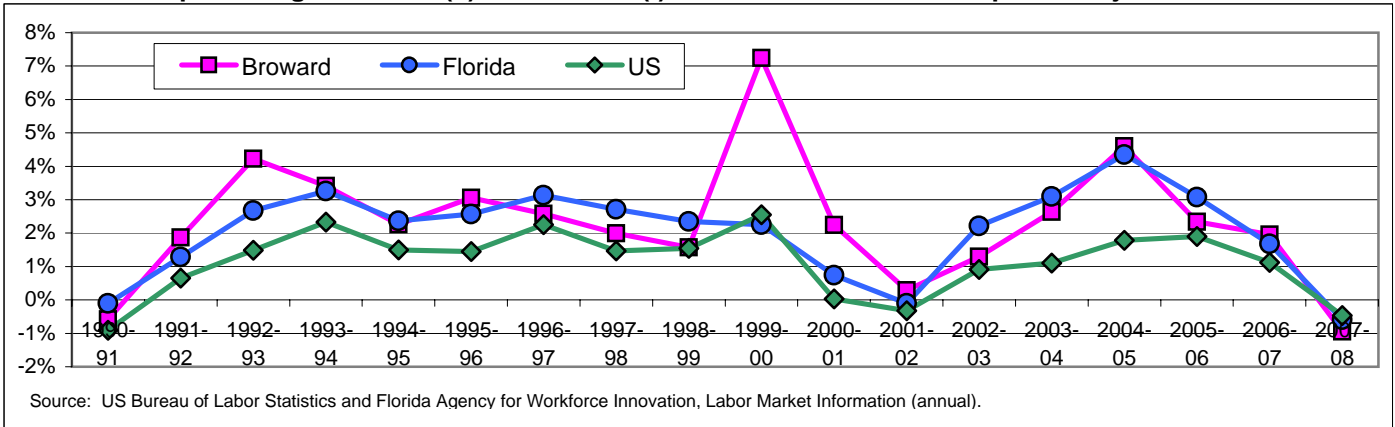
4.9.1(b) New AIDS cases reported per 100,000 residents



The rate of new AIDS cases in Broward County in 2007 (47.1 per 100,000 residents) was 48% higher than the average rate for the State of Florida (31.9). The Broward rate in 2007 is less than half of the high reached in 1994 (102.9).

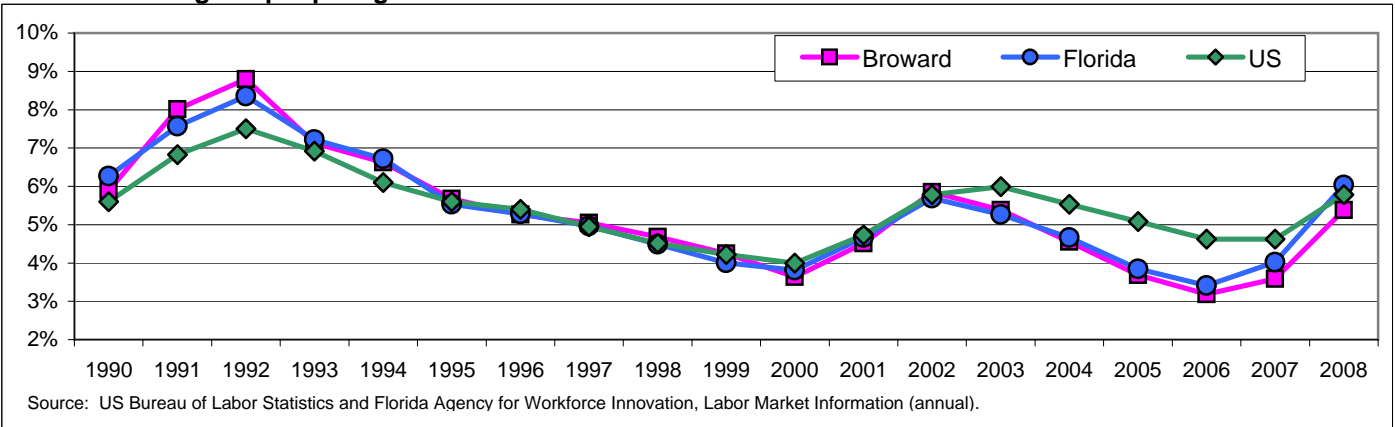
Our Economy

5.1.1 Annual percentage increase (+) or decrease (-) in the number of full and part-time jobs



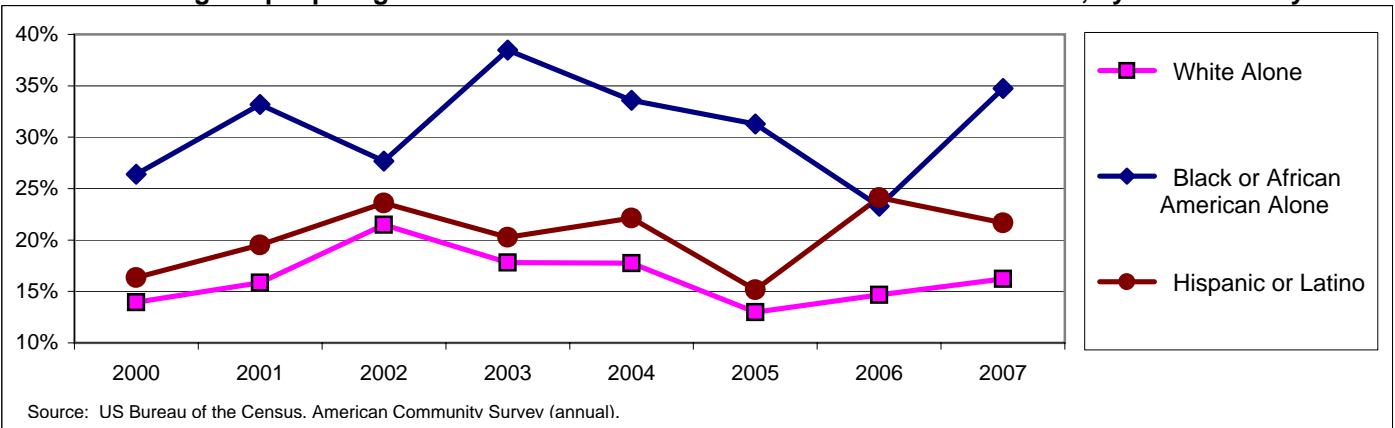
Until 2007, Broward County and the State of Florida maintained higher annual rates of job creation than the US. In 2008, Broward County lost 9,000 jobs, a 1.0% decrease over 2007; this compares to decreases of 0.5% nationally and 0.6% in the State of Florida.

5.2.1 Percentage of people age 16 and older in the labor force who were unable to find work



The average annual unemployment rate in Broward County has remained very close to the state average over most of the last decade, falling from a high of 8.8% in 1992 to 3.6% in 2006, and back up to 5.4% in 2008.

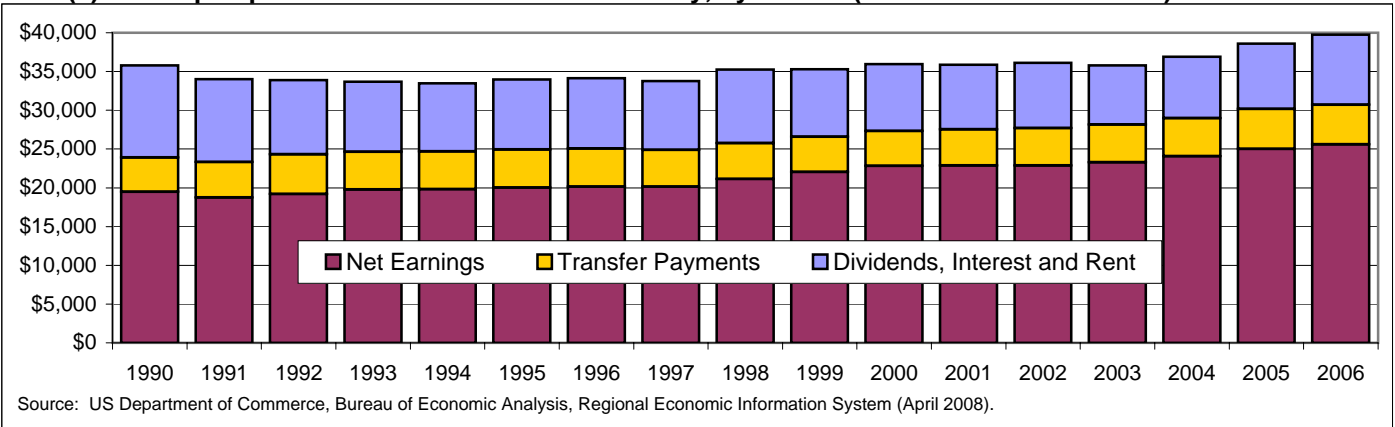
5.3.1 Percentage of people age 16-19 in the labor force who were unable to find work, by race/ethnicity



The unemployment rate for Black or African American teenagers hit a high of 38% in 2003, more than double the 18% rate for White teenagers. After falling through 2006, it rose sharply again in 2007, to almost 35%.

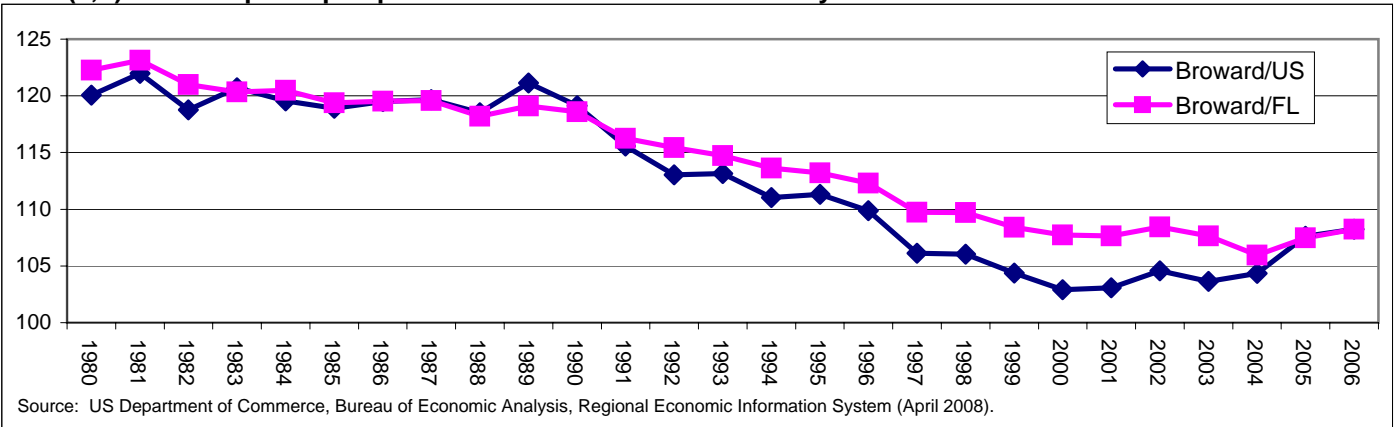
Our Economy

5.5.1(a) Per capita personal income in Broward County, by source (in constant 2006 dollars)



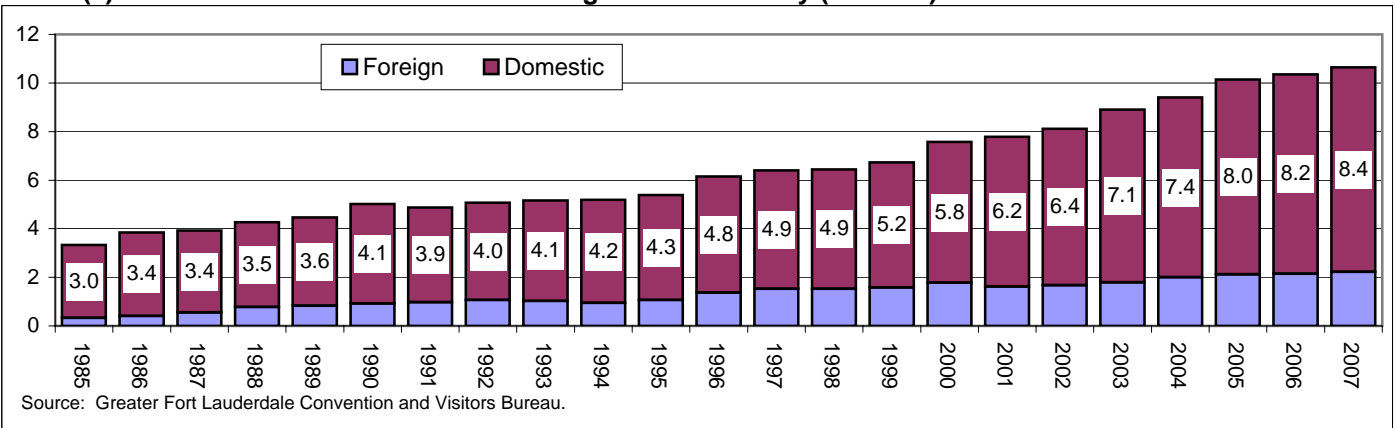
Personal income from Dividends, Interest and Rent continues to represent a higher proportion of total income in Broward County than in the nation as a whole, but the proportion has declined in recent years, as Net Earnings (from salaries and wages) have risen.

5.5.1(c,d) Ratio of per capita personal income in Broward County to Florida and the US



In the 1990s, the per capita personal income of Broward County residents fell as a proportion of both the state and national averages, and then stabilized in 2000 just above the state and national averages, showing a slight recovery in recent years.

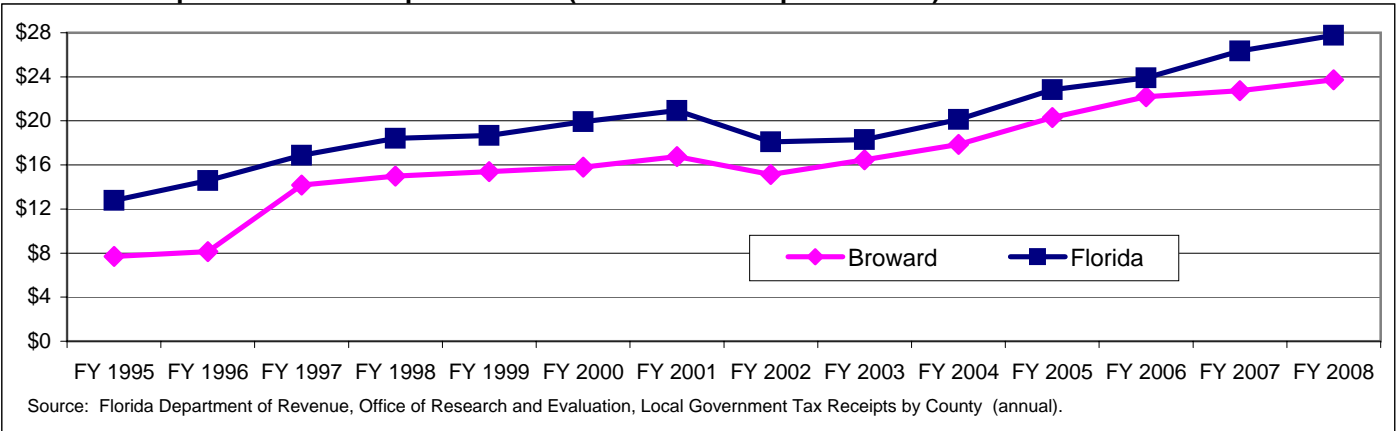
5.11.1(a) Estimated number of tourists visiting Broward County (millions)



The number of tourists visiting Broward County has risen systematically over the last two decades, reaching a total of 10.6 million in 2007, up from 3.3 million in 1985. Although domestic tourists predominate (8.4 million in 2007), foreign tourists are also increasing.

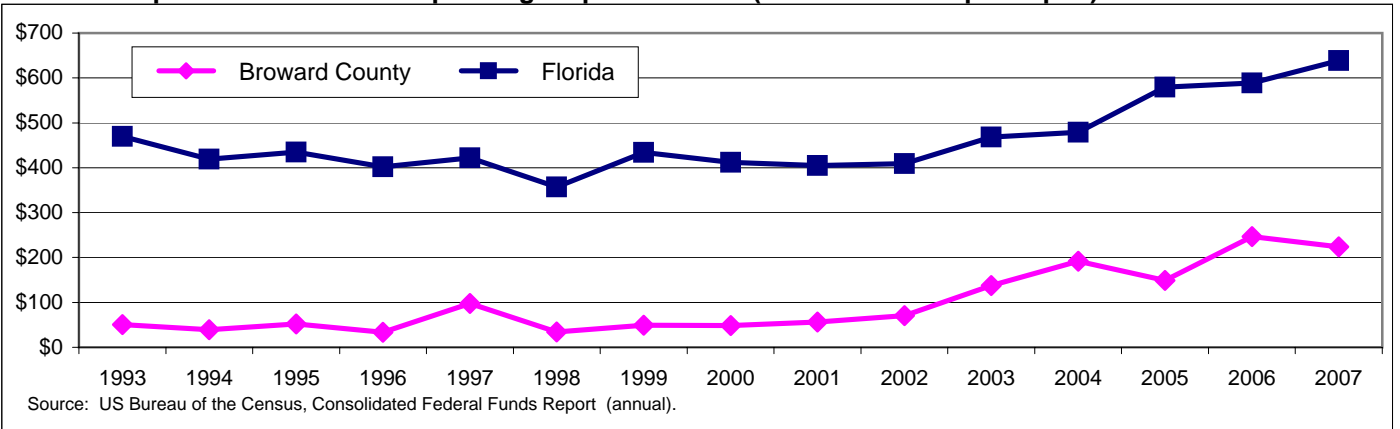
Our Economy

5.11.2 Per capita tourist development taxes (nominal dollars per resident)



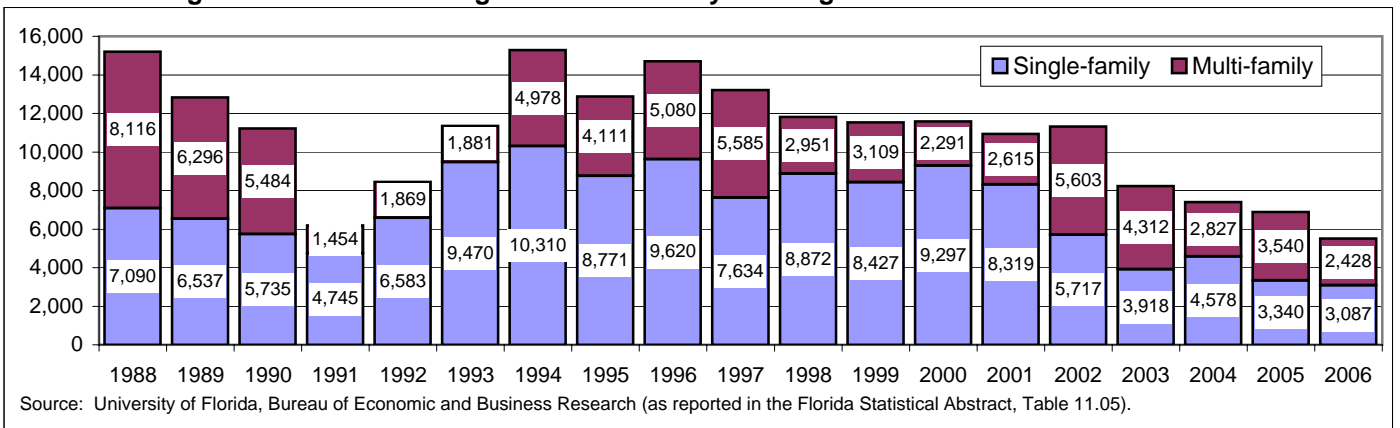
The per capita value of tourist development taxes collected by Broward County has almost tripled over the last decade, from \$7.71 to \$23.73. The County average has remained below the state average throughout the decade.

5.12 US Department of Defense spending on procurement (nominal dollars per capita)



Defense Department spending on procurement in Broward County remains substantially lower than the State of Florida average. In 2007, per capita expenditures in Broward County were \$224, while the State average was almost three times as much (\$638).

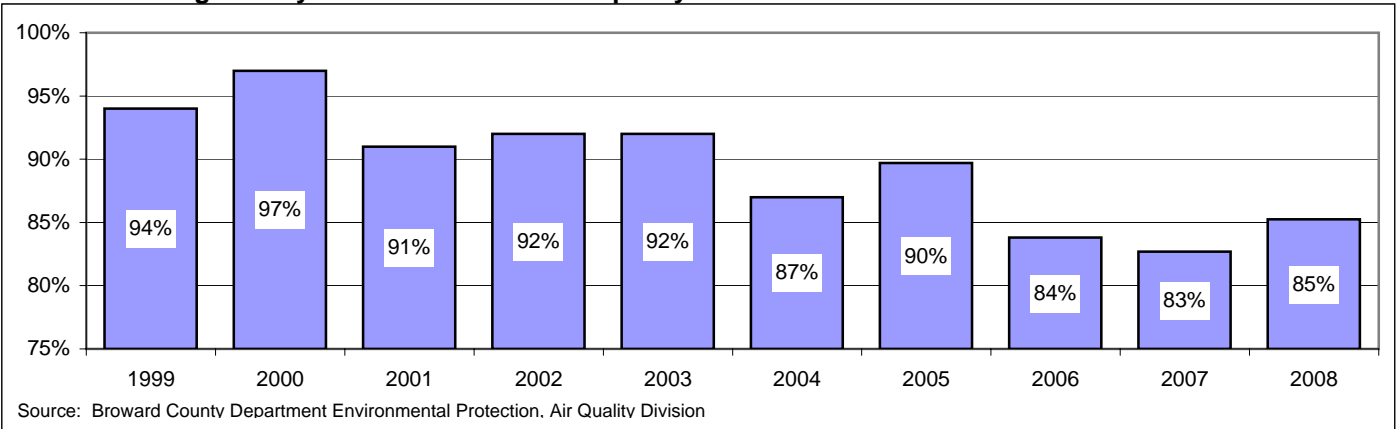
5.16.1 Housing starts: number of single and multi-family housing units that started construction



The total number of housing starts in Broward County fell in 2006 for the fourth consecutive year, reaching a new low of 5,515, with reductions in the number of both multi-family units and single-family units.

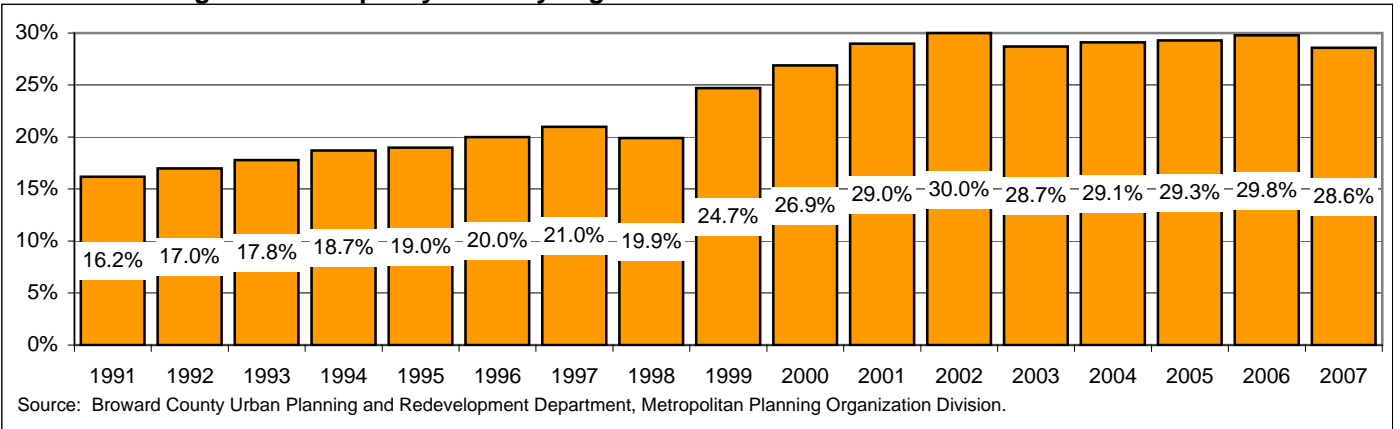
Our Environment

6.1.1 Percentage of days when the outdoor air quality was rated as "Good"



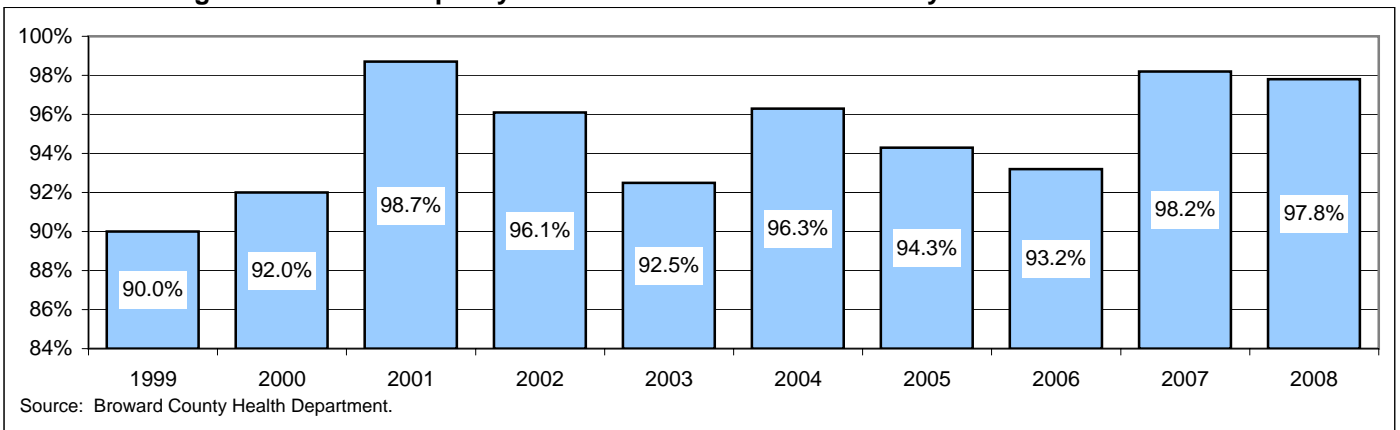
Air Quality was improved compared to 2007 but still lower than previous years. This is due in part to stricter ozone compliance standard applied in 2008. Everglades fires and unfavorable winds during the burning of sugar cane fields also impacted local air quality in 2008.

6.1.3 Percentage of over-capacity roadway segments



The 2007 figure is 4% lower than the 2006 levels, which is directly attributed to the lower annual growth in population, employment, school enrollment and other socioeconomic variables leading to lower travel demand.

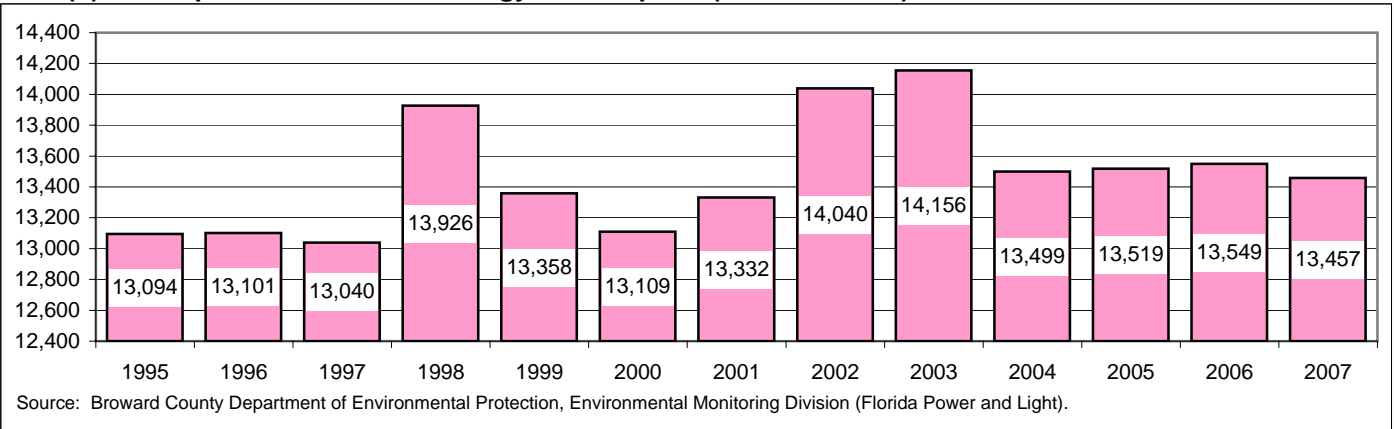
6.3.3 Percentage of beach water quality test results rated as "Satisfactory"



Over the past 4 years the percentage of satisfactory/good beach water samples averaged 95.9%, with a range from 93.2% to 98.2%. The 2008 result (97.8%), which is 1.9% above the 4-year average, may be the result of a dry year with few major rainfall events.

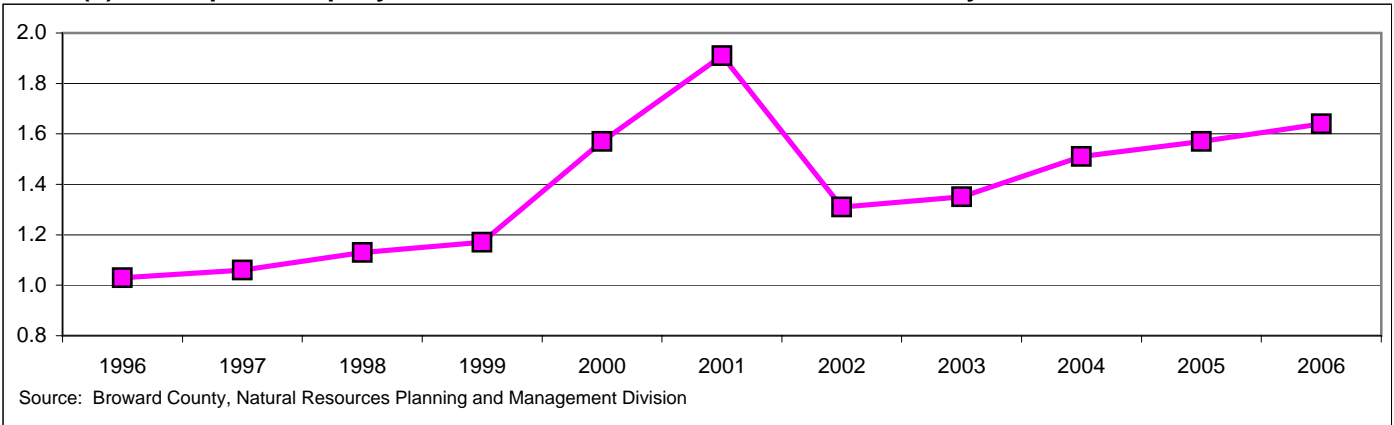
Our Environment

6.9.1(b) Per capita annual electric energy consumption (kilowatt-hours)



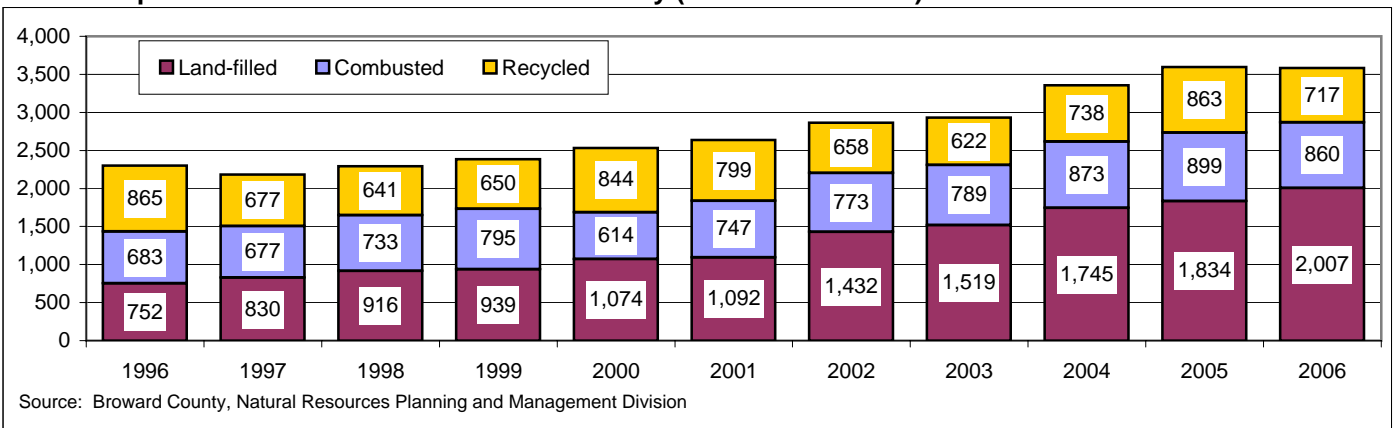
Per capita electrical consumption has fluctuated significantly over time. After reaching highs of over 14,000 kwh per year in 2002 and 2003, it dropped in 2004, then rose gradually in 2005 and 2006, before decreasing again to 13,457 in 2007.

6.10.1(b) Per capita tons per year of solid waste collected in Broward County



For the first time since 1997, the total waste produced in Broward County decreased between 2005 and 2006, perhaps associated with the downturn in the economy and reduced construction waste.

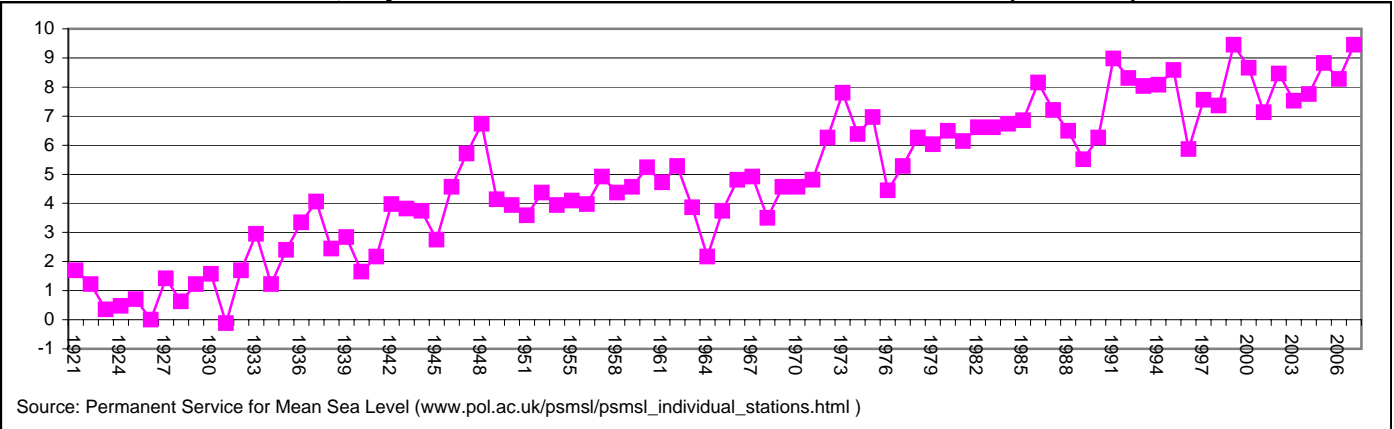
6.10.2 Disposition of solid waste in Broward County (thousands of tons)



The volume of solid waste landfilled in Broward County has risen steadily in recent years - it more than doubled between 1999 and 2006. At the same time, both the volume and the proportion of the solid waste stream has declined.

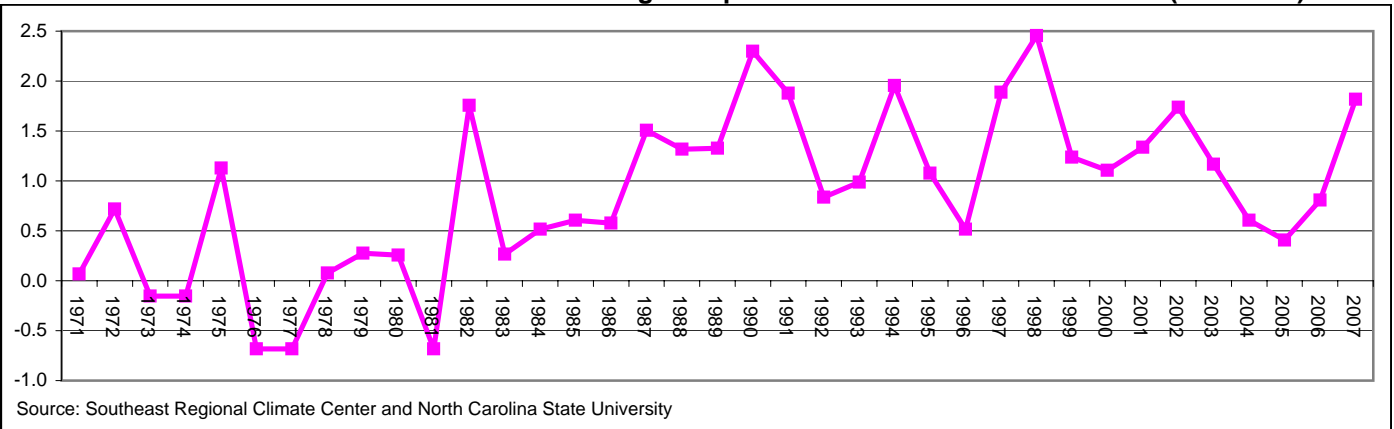
Our Environment

6.11.1 Mean sea level rise, Key West station - deviation from the 1920 baseline (in inches)



The trend since 1920 has been a variable increase in sea level. In 2007, the average sea level was 9.45 inches greater than the 1920 baseline.

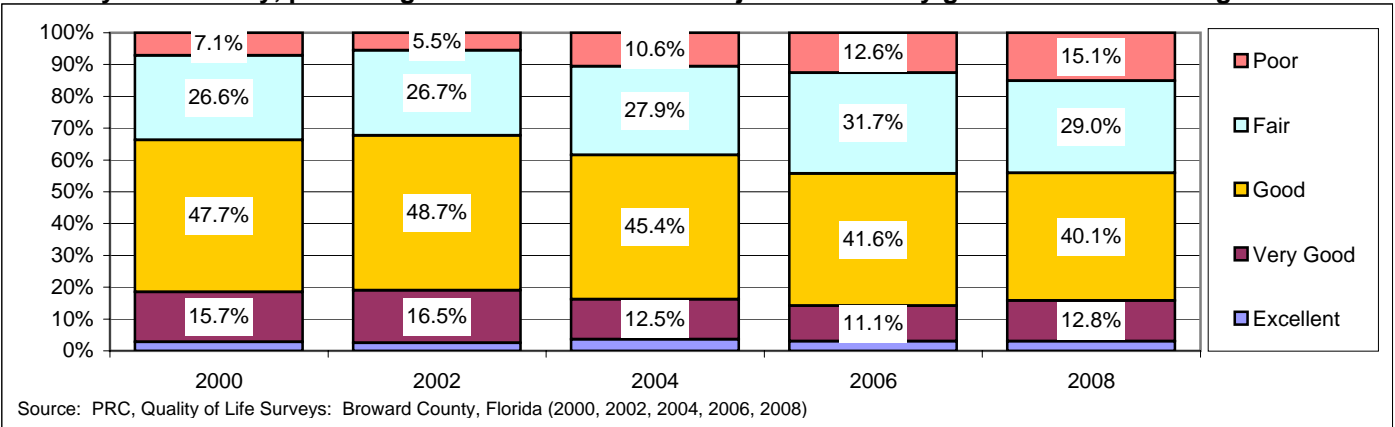
6.11.2 Fort Lauderdale - deviation in annual average temperature from the 1950-70 baseline (Fahrenheit)



Since 1971, only five of the 17 years have shown an average annual temperature below the 1950-1970 baseline. In 2007, the average annual temperature was 1.82° F above the baseline.

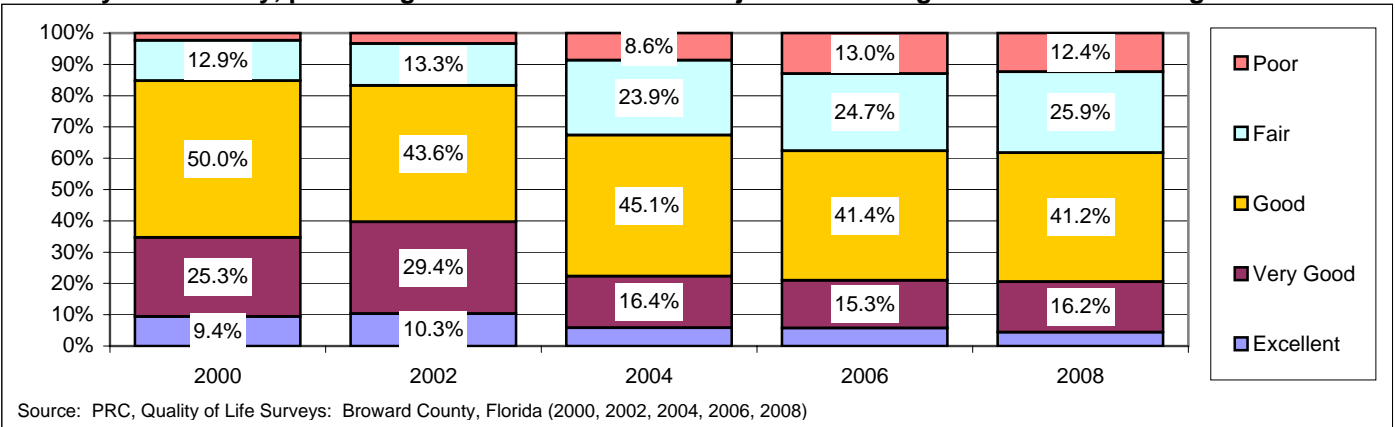
Our Government

7.1.2 By CCB survey, percentage of adults who rated the job their county government was doing as...



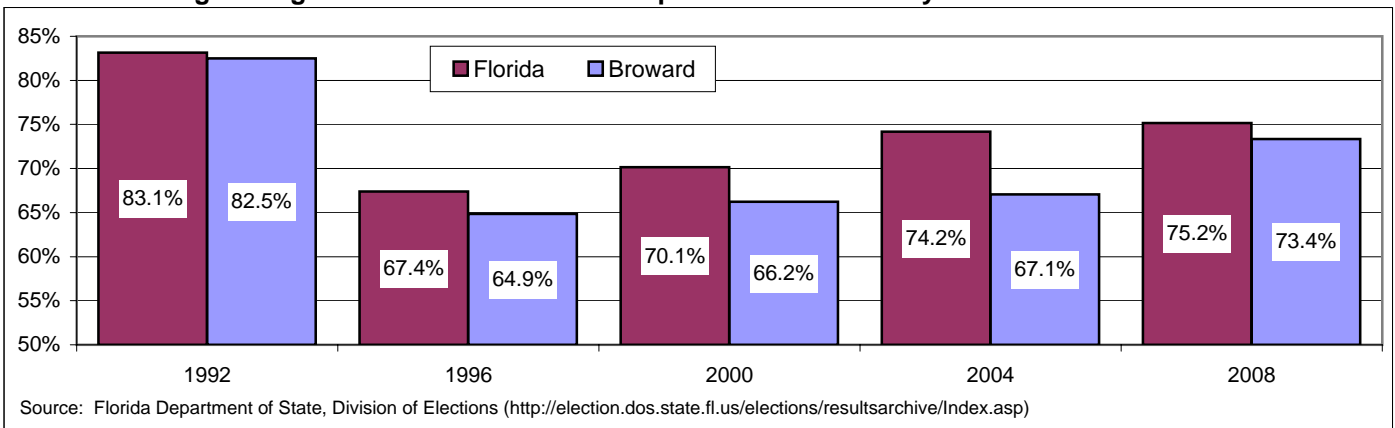
In 2008, 55.9% of Broward County adults rated the job their county government is doing as excellent, very good or good, about the same as in 2006 (55.7%). Both were down significantly from the high of 67.8% in 2002.

7.2.1 By CCB survey, percentage of adults who rated the job their local government was doing as ...



In 2008, 61.8% of Broward County adults rated the job their local government is doing as excellent, very good or good, about the same as in 2006 (62.3%). One in eight rated the services where they live as poor in 2006 and 2008.

7.9.2 Percentage of registered voters who voted in presidential election years



Broward County voters returned to the polls in 2008, after 12 years of lower turnout. In 2008, 73.4% of adults registered to vote actually voted in the presidential election, up from a low of 64.9% in 1996. This was still less than the Florida average of 75.2% in 2008.